

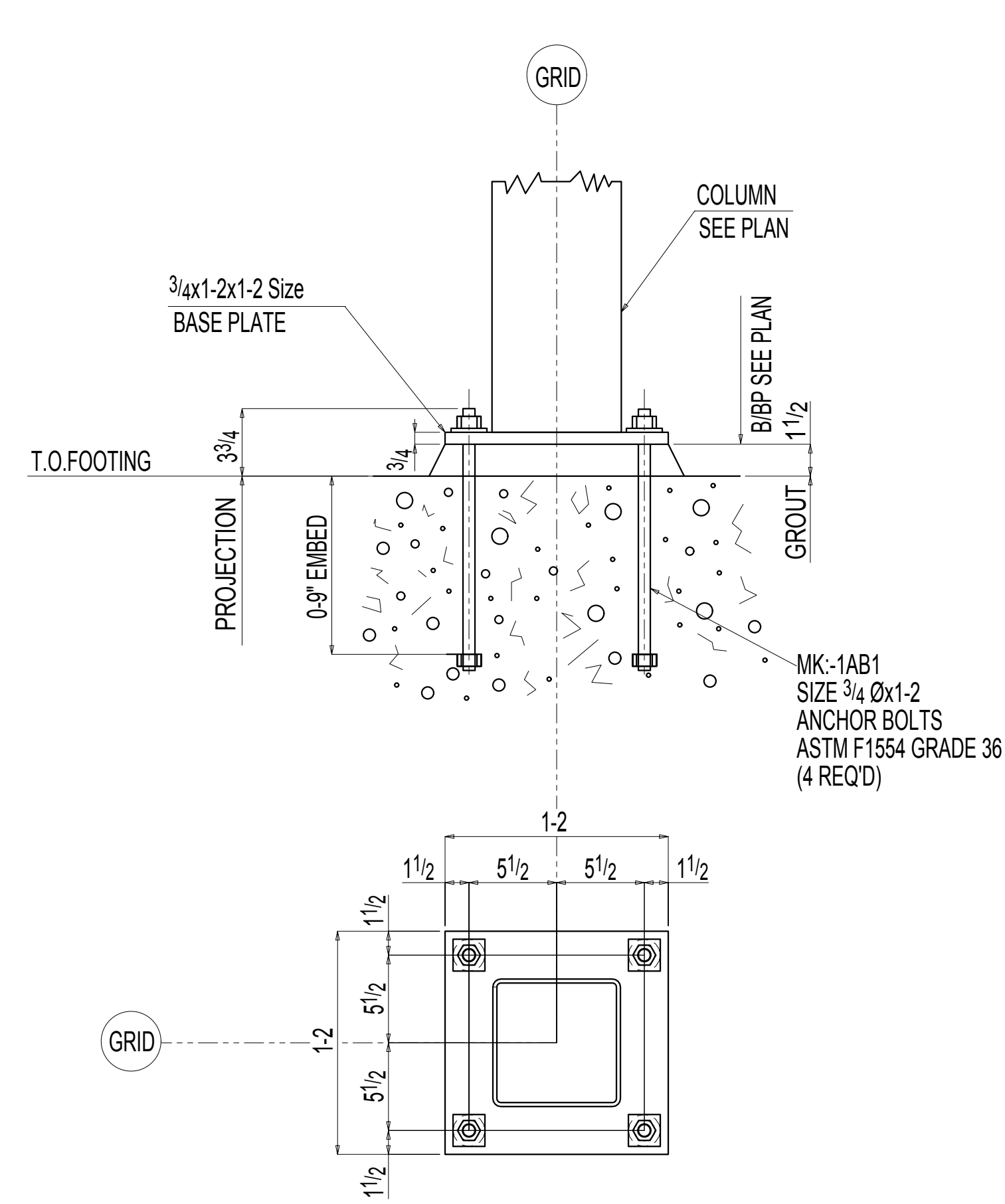
ANCHOR BOLT PLAN

REF: 1/S1

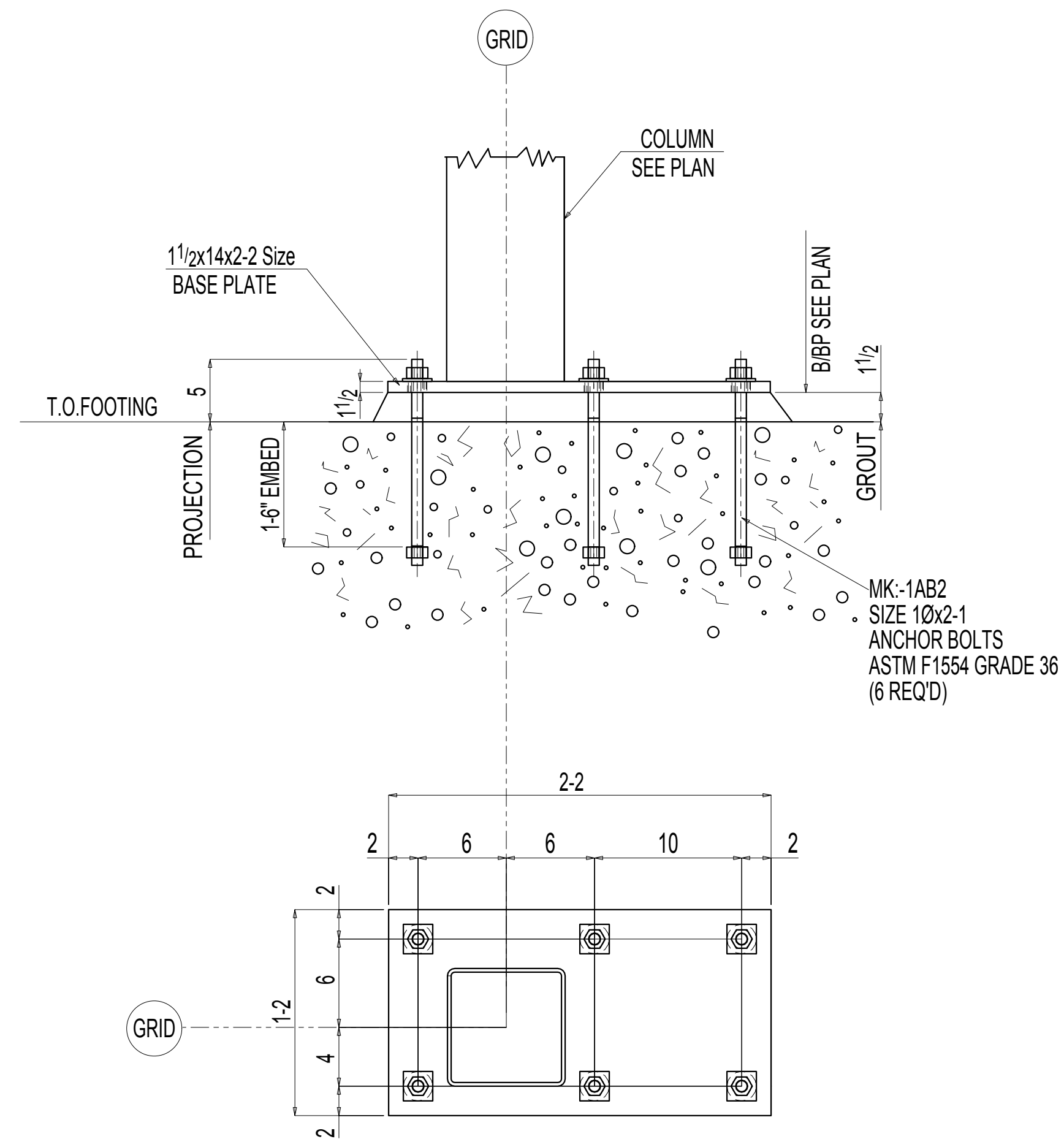
NOTE:
1. FOR SETTING DETAIL REFER SHEET NO-AB2

MATL (U.N.) A-36					
WF SECTIONS A-992					
HOLES (U.N.O.)	11 19 15	A	FOR APPROVAL	ST	RN
12 #	DATE	NO.	REVISION	BY	CHK BY
16 #					
CONN. (U.N.O.)					
3 # A-325N					
SHOP WELD ELECTRODE (U.N.O.)					
3 # E70XX					
SURFACE PREP:					
SP					
SHOP PAINT (U.N.O.)					
GRAY PRIMER					
FINISH PAINT (U.N.O.)					
SPECIAL					
	JOB NO.	DRAWN	CHECKED	APPROVED	DRG NO.
	15-20	ST	RN	ST	AB1
		11 19 15	11 19 15		

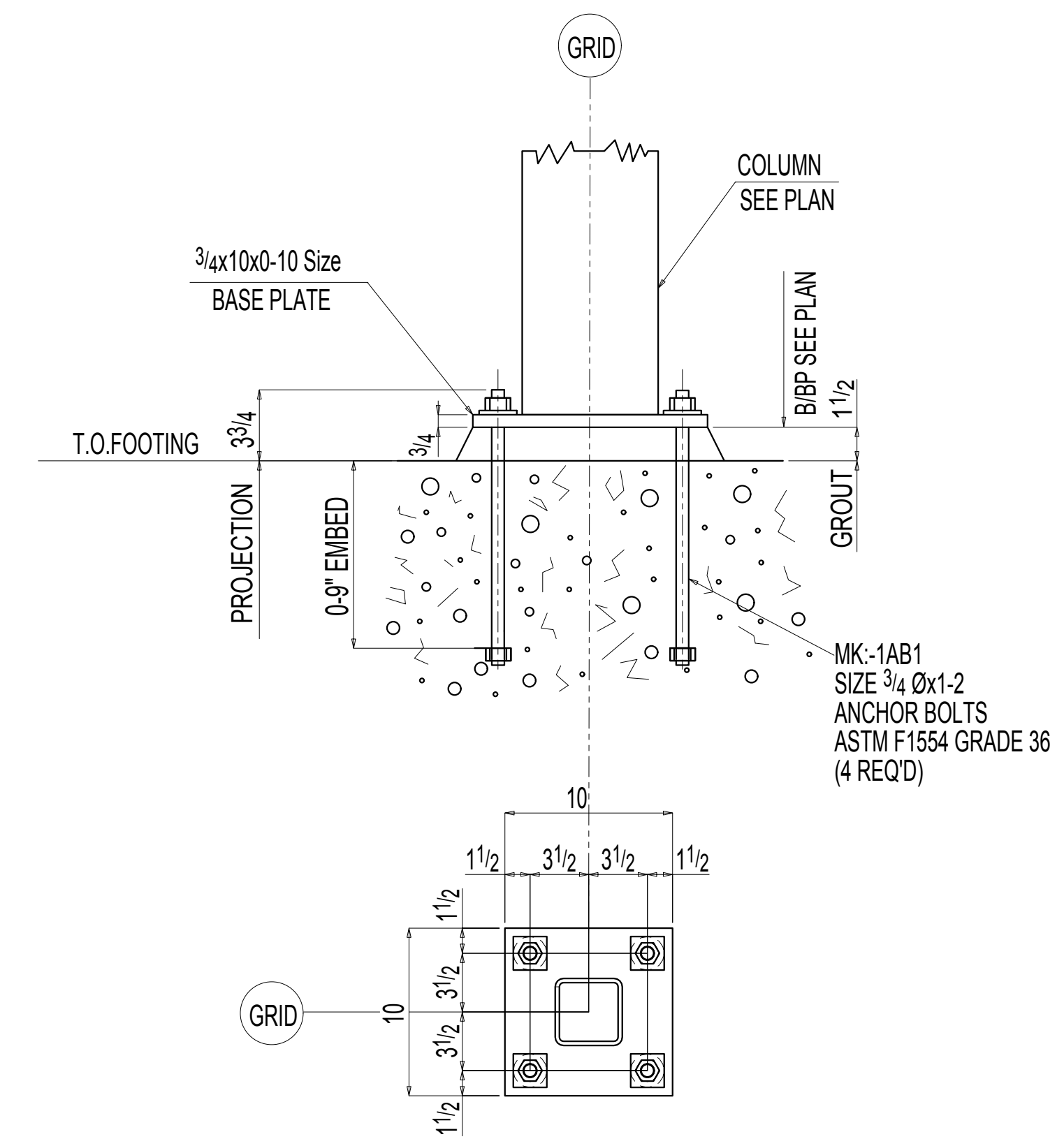
FILLET RADIUS=1/2" UNO



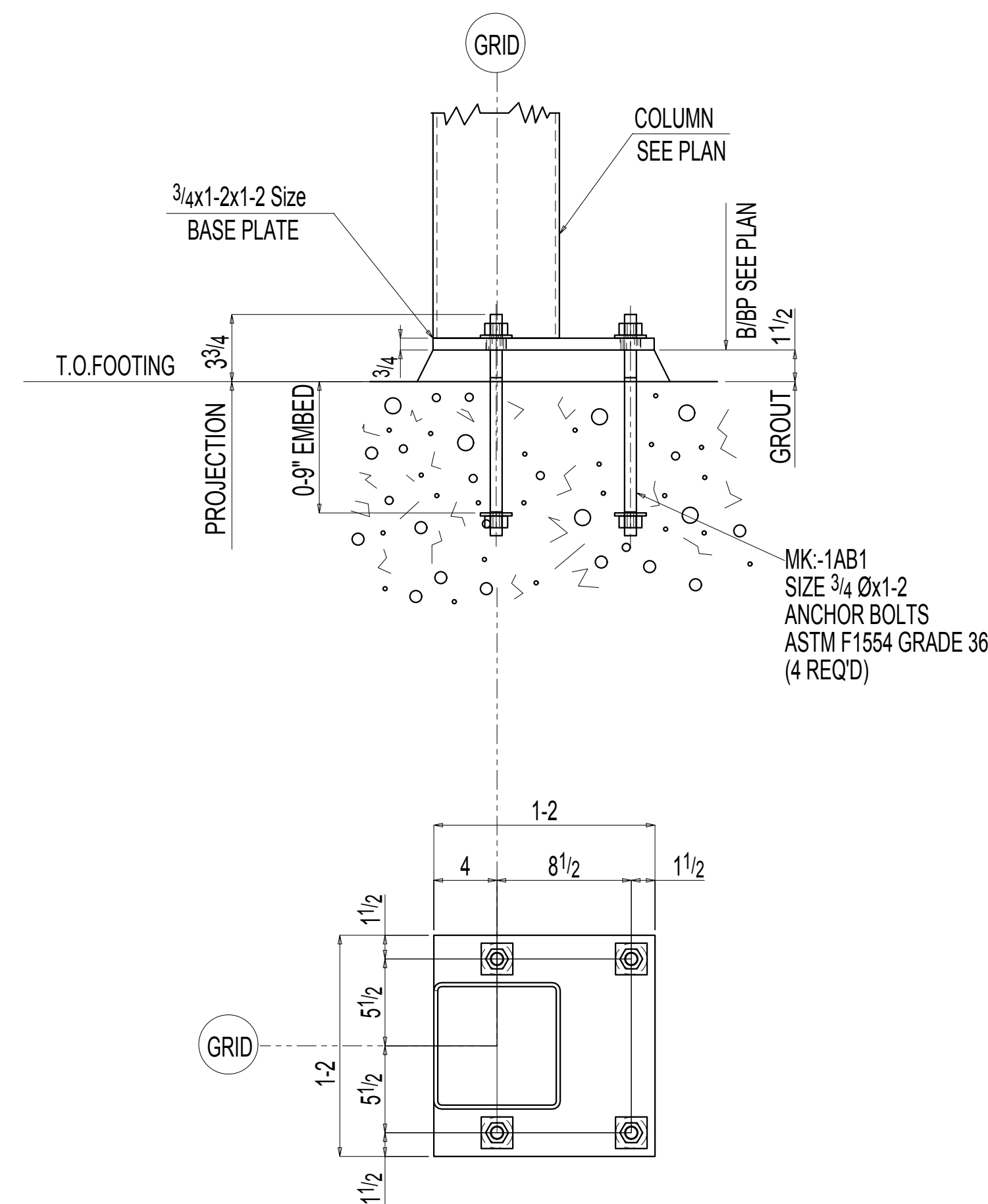
SETTING "A"
AT 26 PLACES



SETTING "B"
AT 6 PLACES



SETTING "C"
AT 6 PLACES



SETTING "D"
AT 2 PLACES

REF:- AB1
FILLET RADIUS=1/2" UNO

MATL (U.N.) A-36					
WF SECTIONS A-992					
HOLES (U.N.O.)	13	A	FOR APPROVAL	ST	RN
	16	NO.	REVISION	BY	CH BY
CONN. (U.N.O.)	3				
	2				
SHOP WELD ELECTRODE (U.N.O.)					
SURFACE PREP.					
SHOP PAINT (U.N.O.)					
SPECIAL					
	JOB NO.	DRAWN	CHECKED	APPROVED	DRG NO.
	15-20	ST	ST	RN	AB2
		11/19/15	11/19/15		