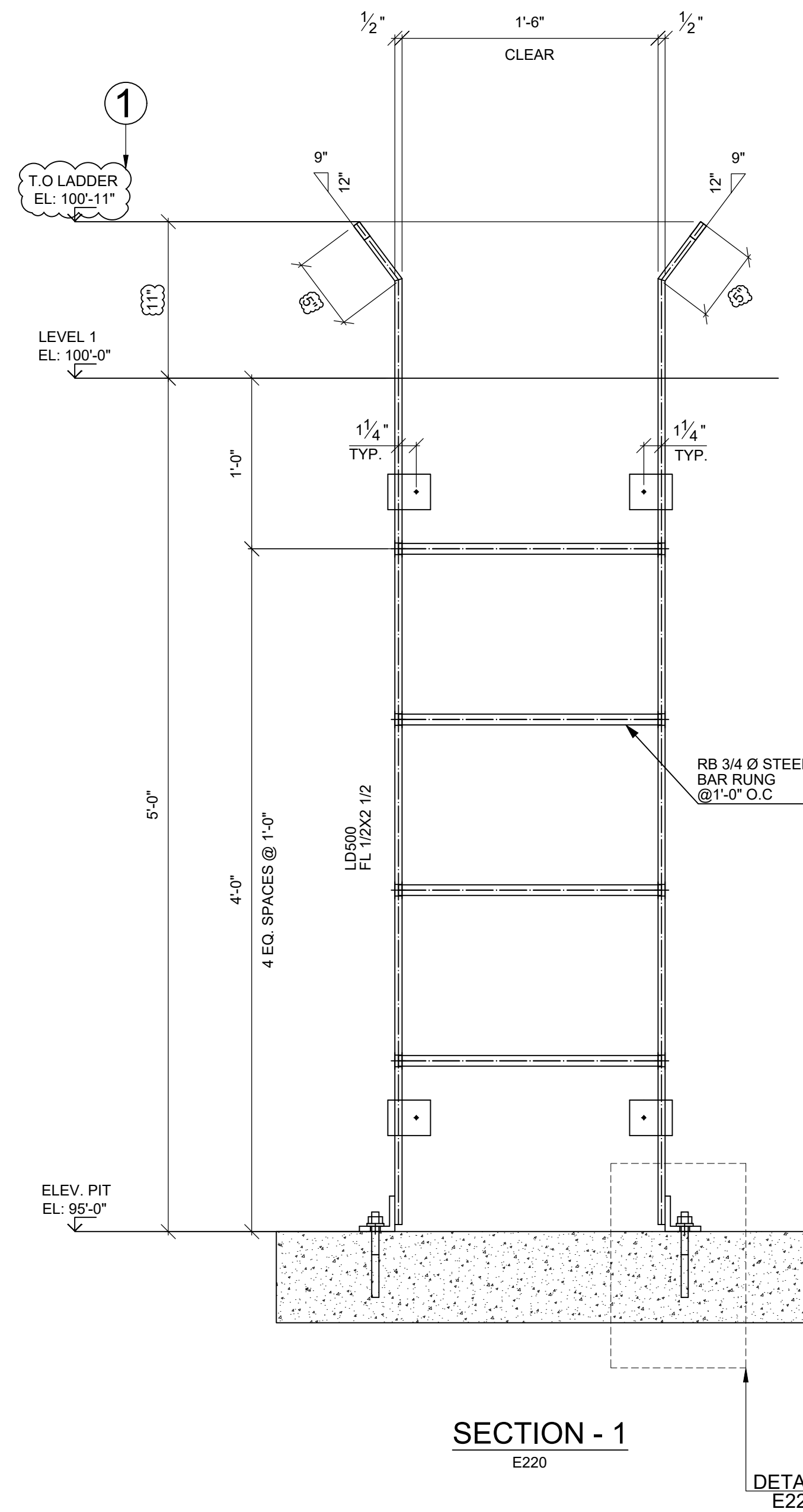
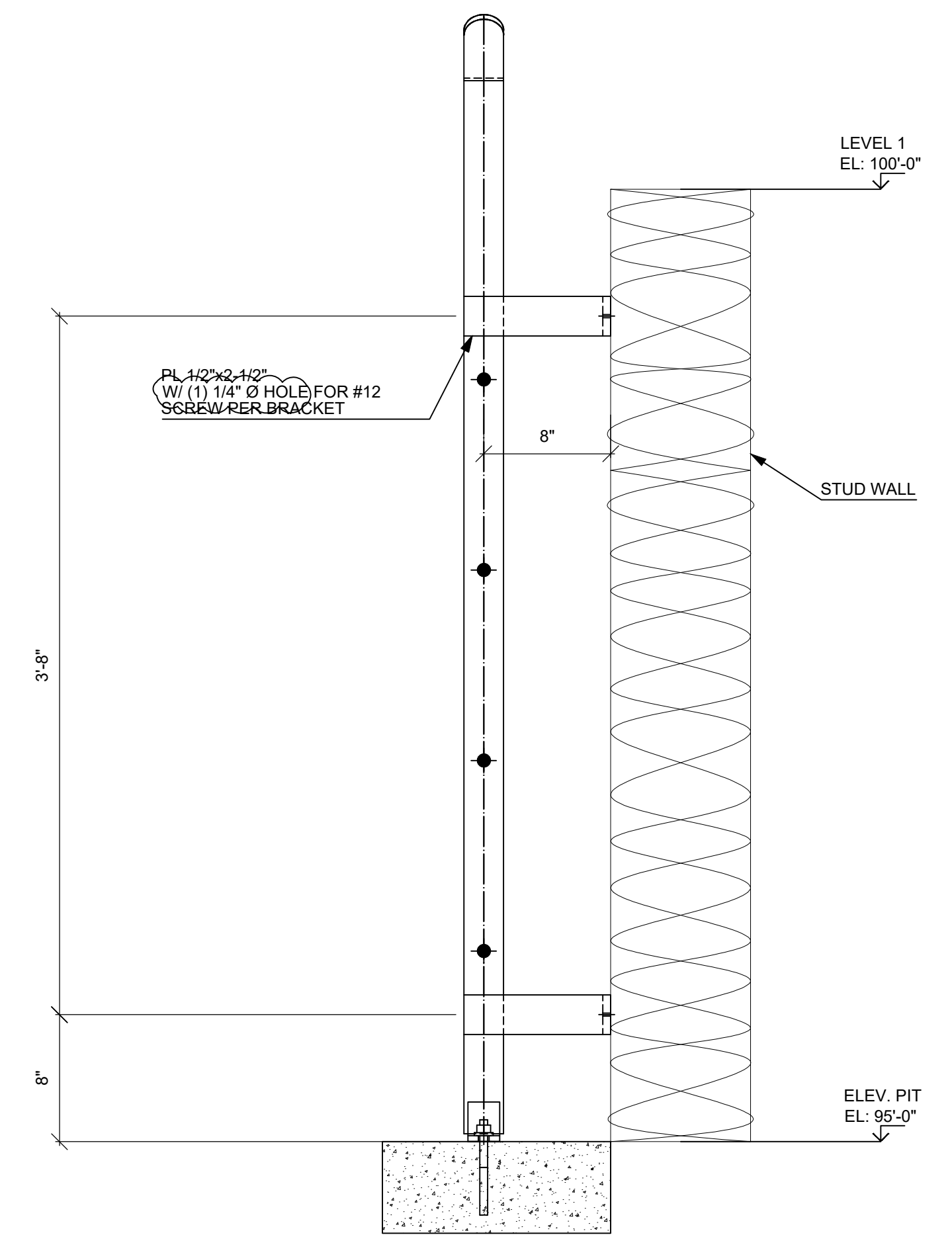


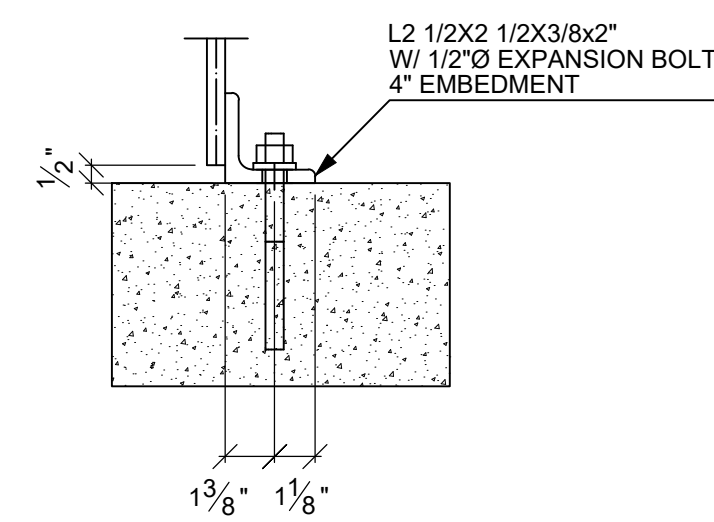
ELEVATOR PIT LADDER PLAN @ AREA-B
(REF: 25/A7.2)



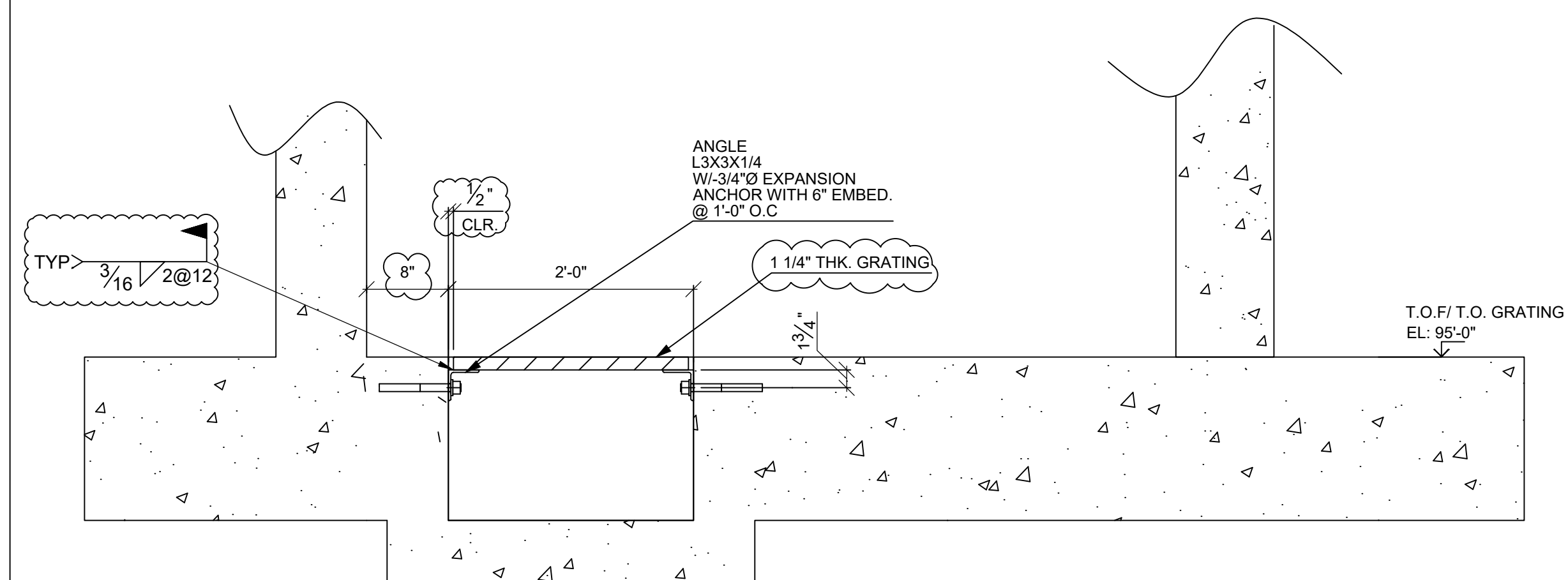
SECTION - 1
E220



SECTION - 2
E220



DETAIL-A
E220



SECTION - 3
(REF: 21/S3.3)
E220

APPROVER NOTE:
1. PLEASE VERIFY & CONFIRM T.O LADDER
EXTENSION FROM LEVEL 1

PLEASE VERIFY ALL CLOUDED DIMENSIONS WITH
APPROVAL NOTE DURING APPROVAL STAGE. IF NOT
IT WILL BE ASSUMED THAT SAME ARE ACCEPTED AND
READY TO PROCEED FOR FABRICATION

**APPROVER TO VERIFY ALL
CLOUDED INFORMATION.**

DETAIL ENGINEERING :

VEGAZVA Vegazva Technologies Inc.
3701 W Algonquin Rd STE 640
Rolling Meadows, IL 60008 USA

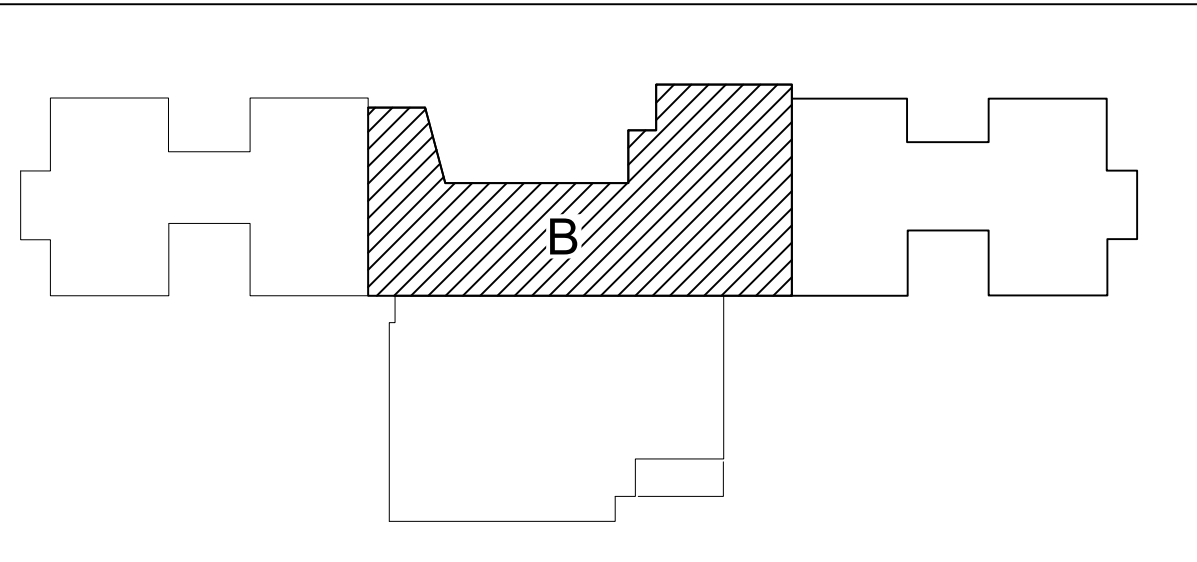
RELEASED :- FOR APPROVAL

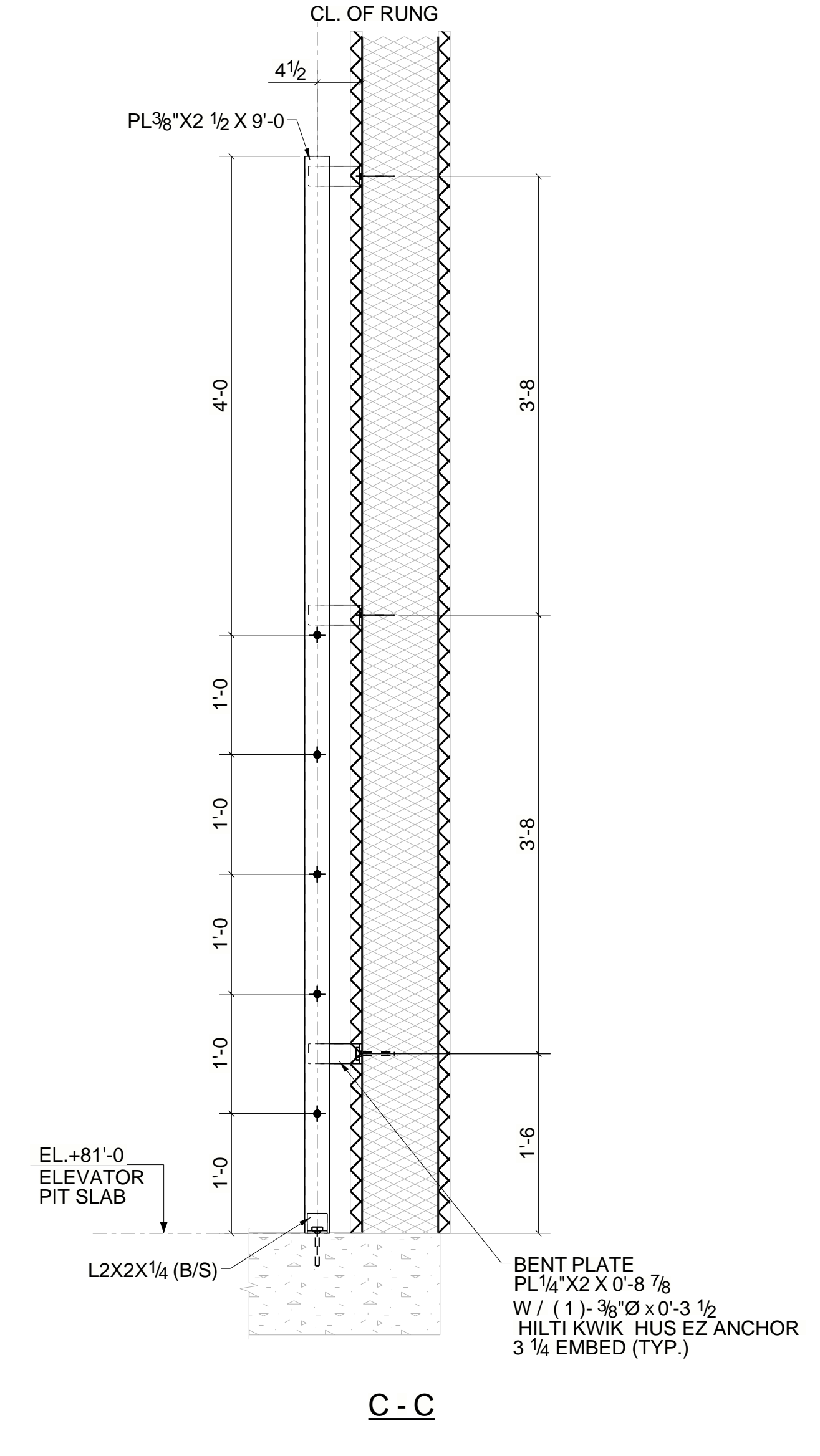
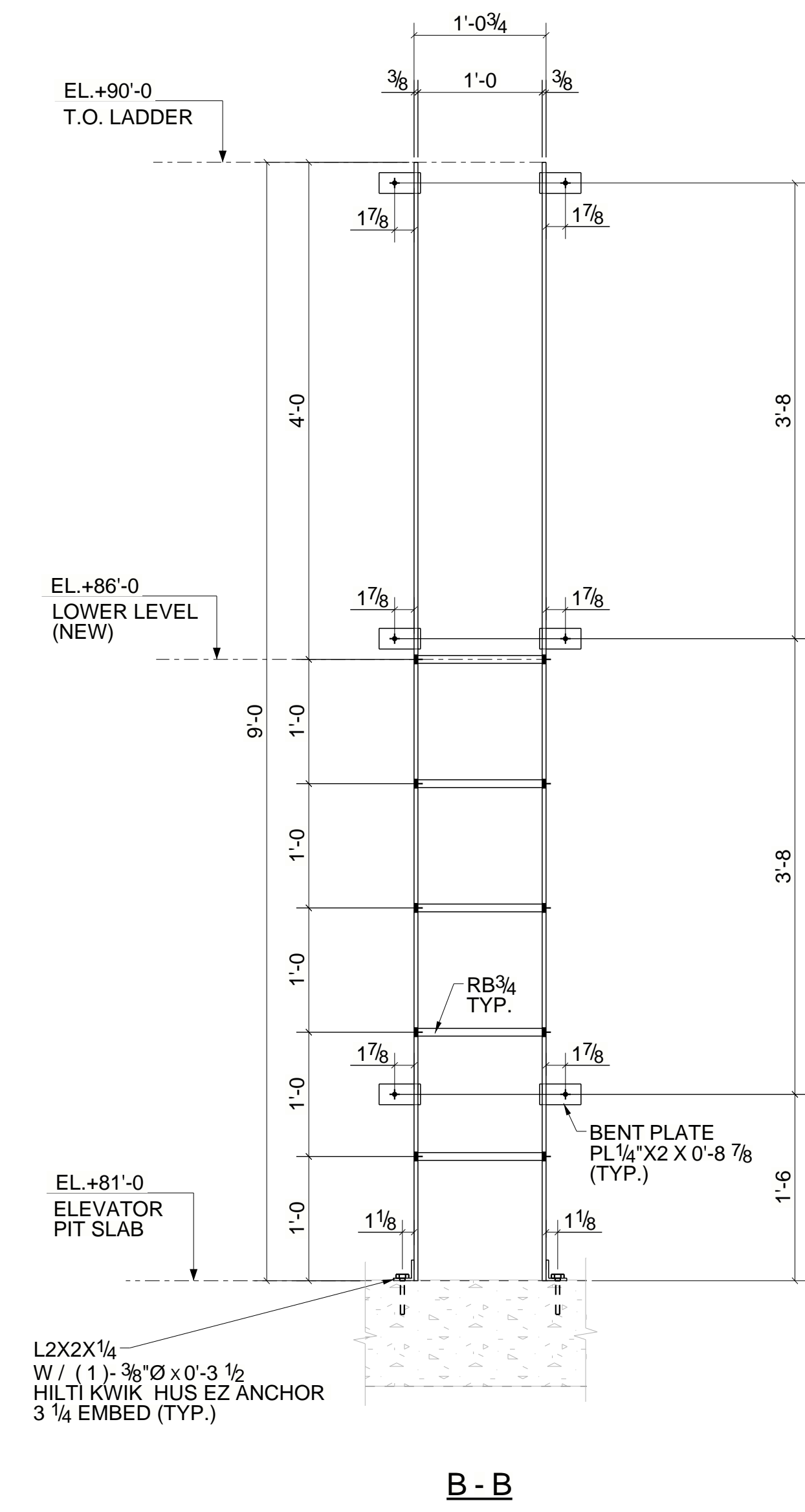
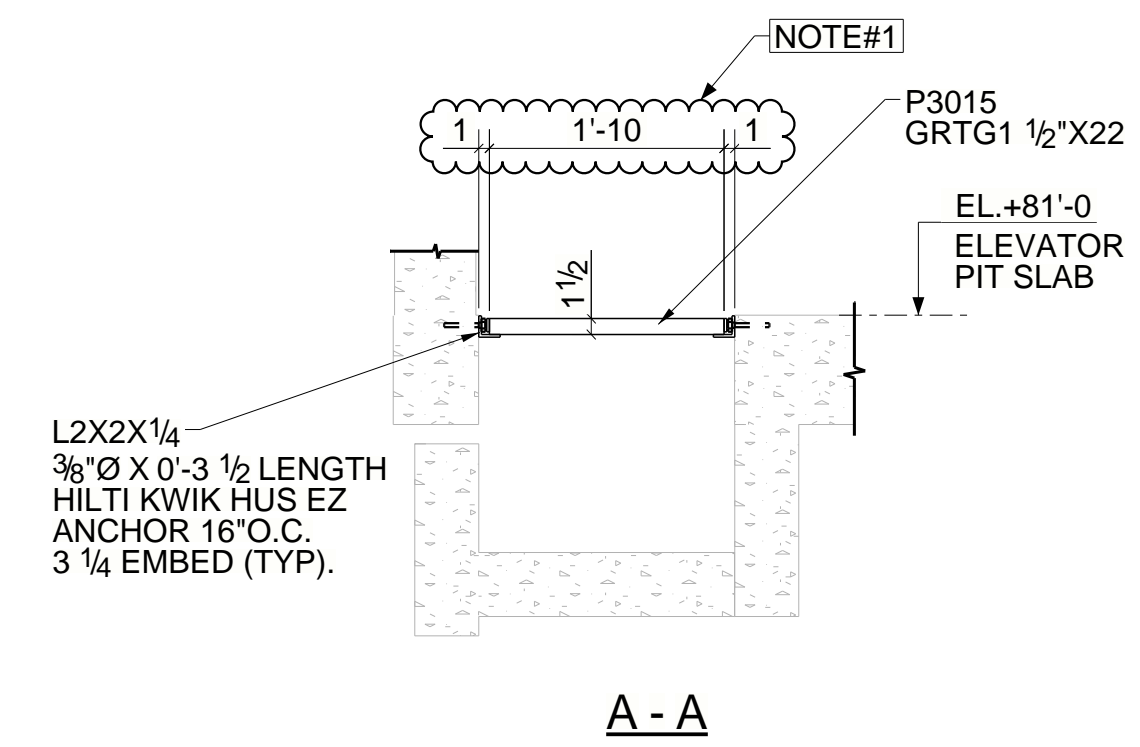
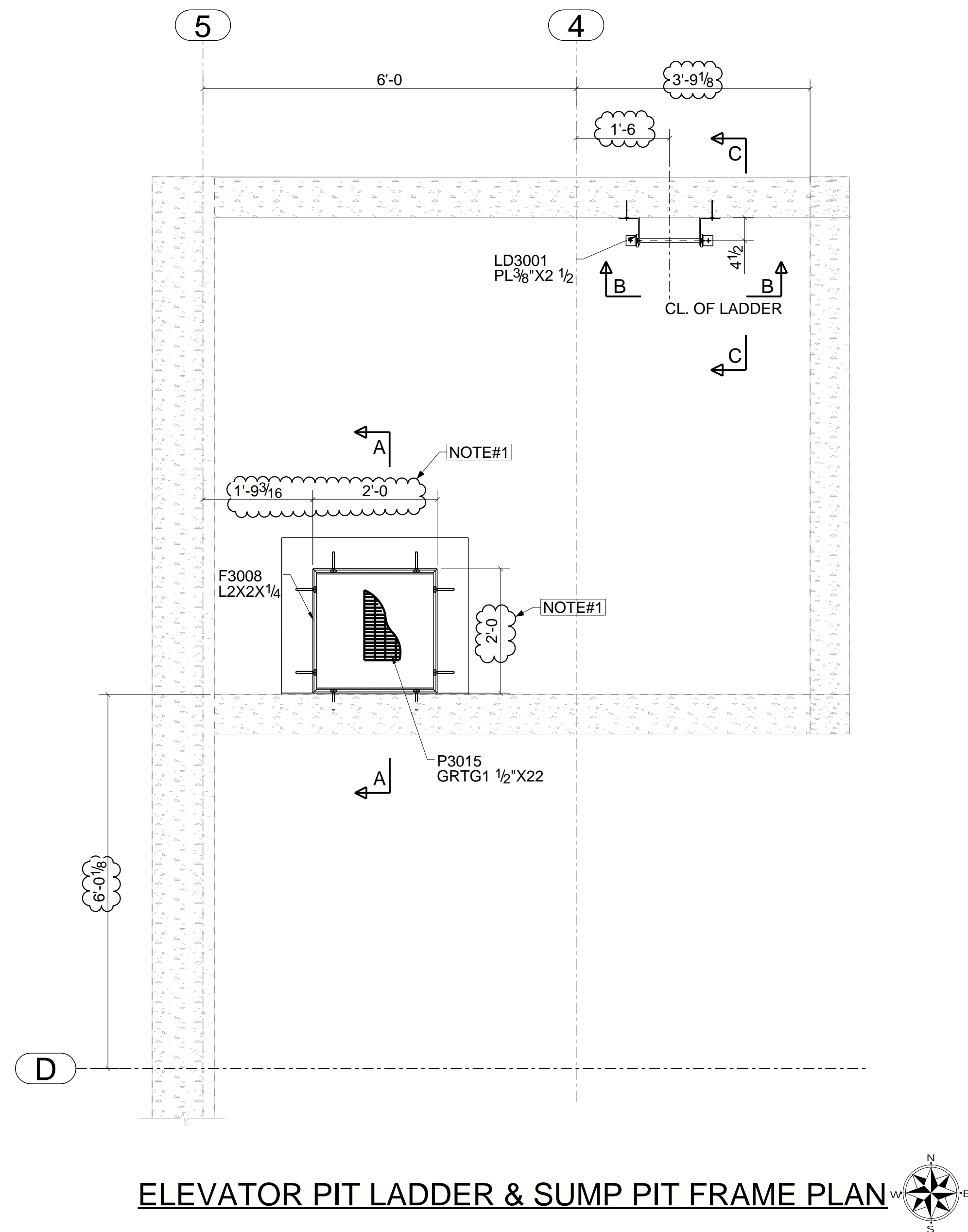
GENERAL NOTES:		NO	DATE	REVISION
1. WELDING ELECTRODE SHALL BE E70		1	11/11/2021	FOR APPROVAL
2. ALL GAS RE-entrant CUTS WILL HAVE A RADIUS OF 1/2" U.N.O.				
3. ALL DIMENSIONS ON THIS SHEET WILL MEET THE ALLOWABLE TOLERANCE LISTED U.N.O.				
4. ERECT PIECES WITH ERECTION MARK AT END AS SHOWN ON PLAN.				
5. MATERIAL SHALL BE ERECTED WITHIN ACCORDANCE OF THE LATEST EDITION OF THE CODE OF STANDARD PRACTICE FOR STEEL BUILDINGS BRIDGES.				

ALLOWABLE TOLERANCE + 1/8"

PRINT RECORD			CONTRACTOR		ARCHITECT		PROJECT	
FOR	NO	DATE						
APPL								
SHOP								
DIST								
			CHECKED		AR		2120	
			SB		DATE		Customer No.	
			FIXED		10/30/2021		SHEET NO. E220	
			PS				OF SHEETS	

KEY PLAN





G.C NOTE:-

- 1). G.C TO CO-ORDINATE LOCATION & OPENING SIZE OF ELEVATOR PIT FRAME PRIOR TO INSTALLATION.

NOTES
 MATERIALS WILL NOT BE SCHEDULED FOR FABRICATION UNTIL APPROVAL IS RECEIVED.
 AISC CODE OF STANDARD PRACTICE, AMERICAN INSTITUTE OF STEEL CONSTRUCTION
 SECTION 5, PAGE 239 PARAGRAPH 7.12
 7.12 Correction of errors
 Normal erection operations include the correction of minor misfits by moderate amounts of reaming, chipping or cutting, and the drawings of elements into line through the use of drift pins. Errors which cannot be corrected by the foregoing means or which require major changes in member configuration are reported immediately to the owner and the fabricator by the erector, to enable whoever is responsible either to correct the error or to approve the most efficient and economic method of correction to be used by others.
 Unless this procedure is followed no back charges will be accepted.
 This drawing was prepared by and for the exclusive use of Doing Steel, Inc. The distribution or reproduction of this drawing or the construction of the product shown in this drawing by any person other than Doing Steel, Inc. is absolutely unauthorized and prohibited.

PAINT	ISSUE	DATE
_____ (Unless Noted)	APPROVAL	A: 01/27/2021
CLEAN _____ (Unless Noted)	B: _____ C: _____	D: _____
BOLTS _____ A325 (U.N.O.)	FABRICATION	
HOLES _____ (Unless Noted)	JOB USE	Ø

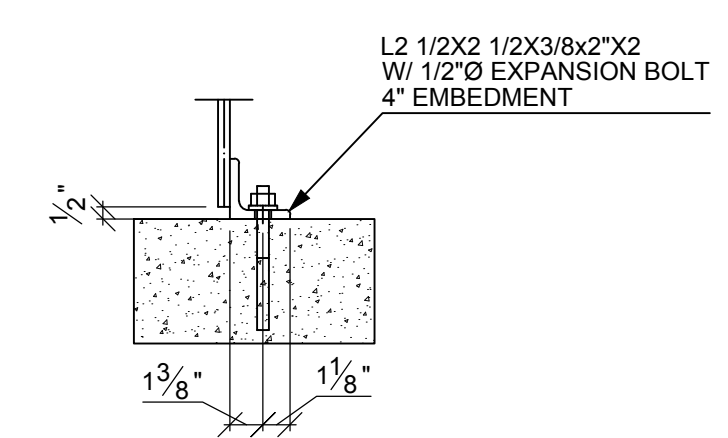
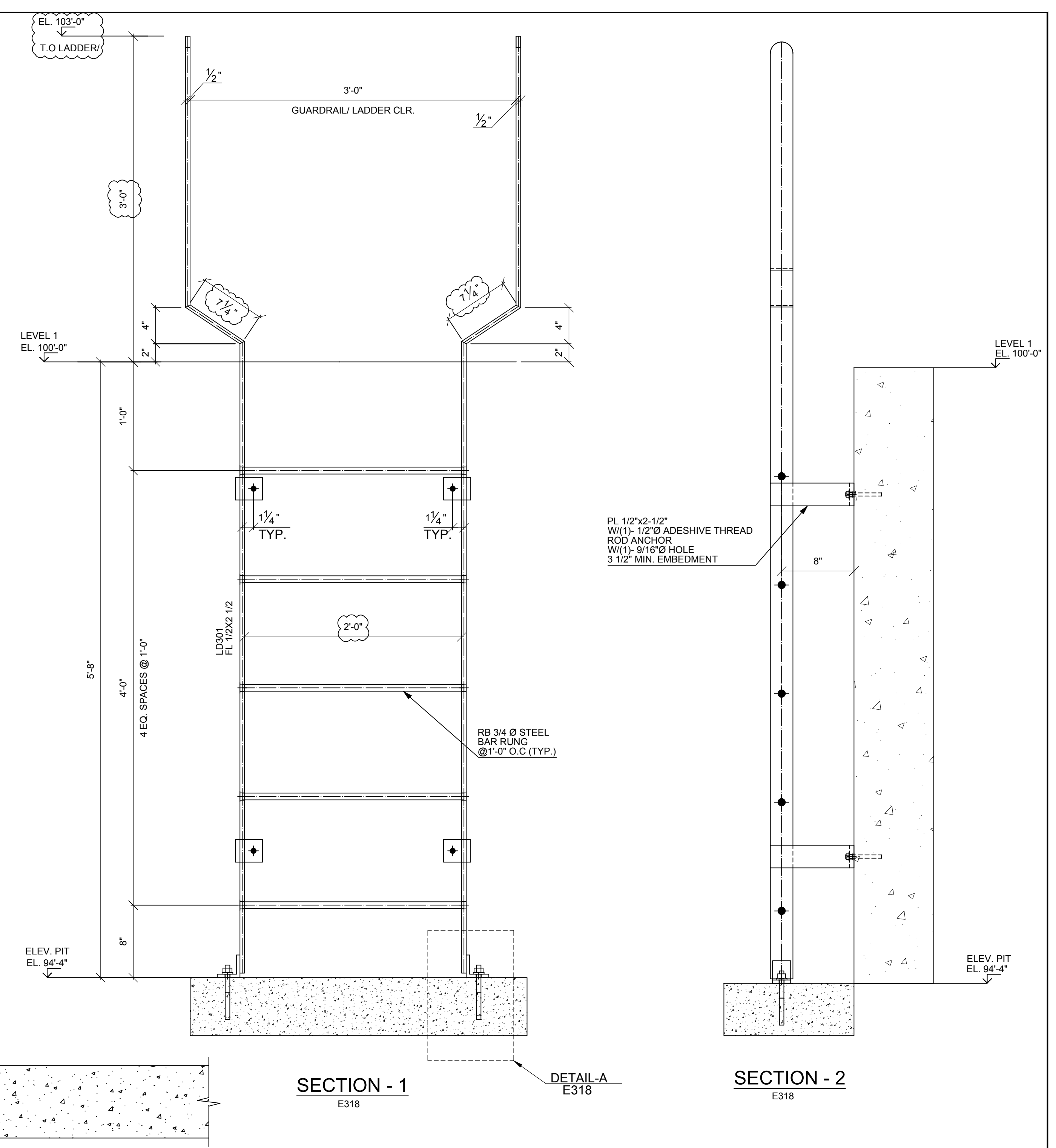
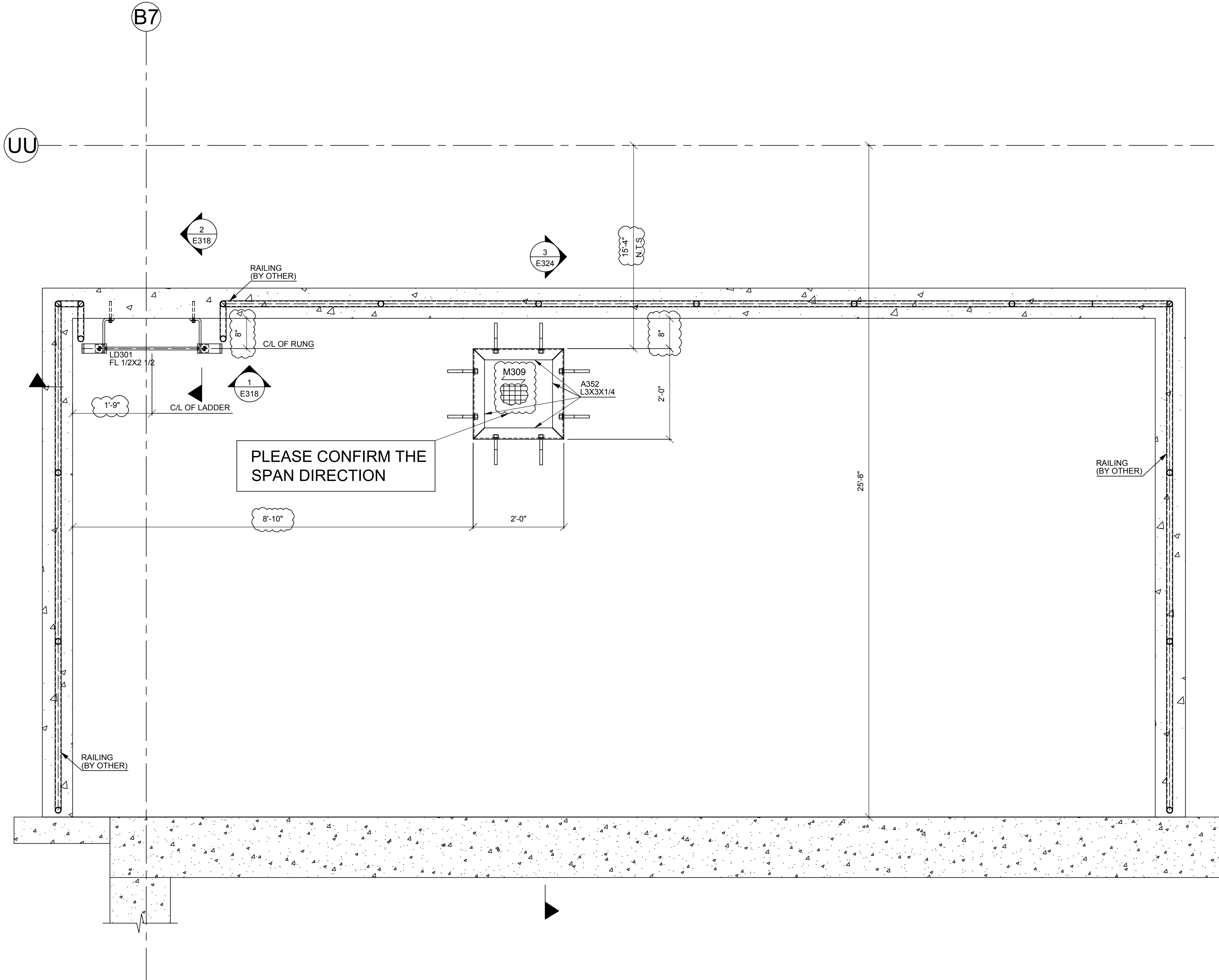


DATE	NO.	DESCRIPTION	BY
09/25/2020			
01/22/2021	0	ISSUED FOR CONSTRUCTION	MR
09/25/2020	10/22/2020	A	MR

DATE	NO.	DESCRIPTION	BY
09/25/2020			
01/22/2021	0	ISSUED FOR CONSTRUCTION	MR
09/25/2020	10/22/2020	A	MR

JOB	WORK ORDER
_____	5120
CUSTOMER	SHEET NO.
_____	E306
LOCATION	REFERENCE:
_____	A401, S200
ARCH - ENGR	DESCRIPTION
_____	_____

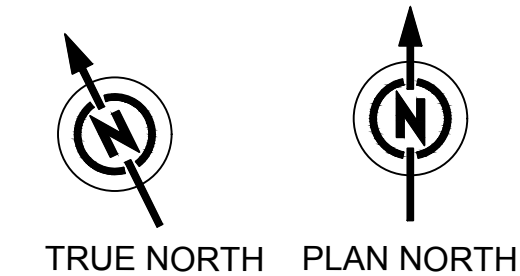
BOLTED CONNECTIONS: BOLT TYPE 1 SNUG TIGHT UNO



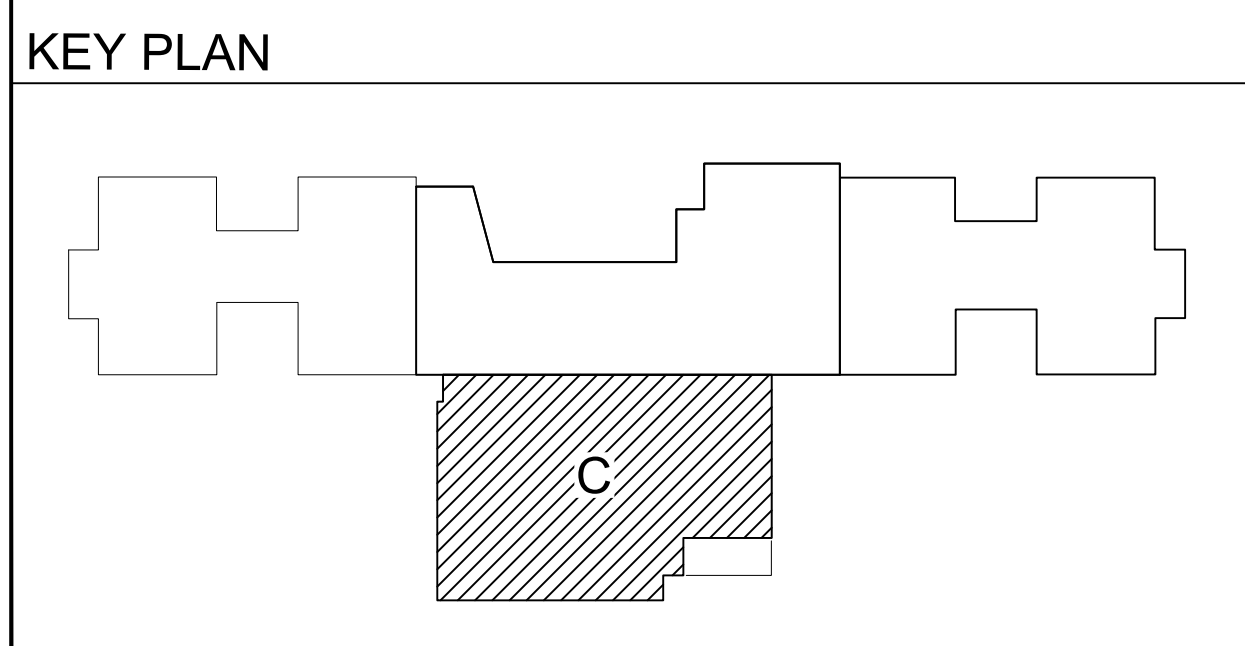
DETAIL-A

PLEASE VERIFY ALL CLOUDED DIMENSIONS WITH APPROVAL NOTE DURING APPROVAL STAGE. IF NOT IT WILL BE ASSUMED THAT SAME ARE ACCEPTED AND READY TO PROCEED FOR FABRICATION

APPROVER TO VERIFY ALL CLOUDED INFORMATION.



PIT LADDER PLAN @ AREA-C (REF: A1.1C)



DETAIL ENGINEERING :

VEGAZVA Vegazva Technologies Inc.
3701 W Algonquin Rd STE 640
Rolling Meadows, IL 60008 USA

RELEASED :- FOR APPROVAL

GENERAL NOTES:

NO	DATE	REVISION
1. WELDING ELECTRODE SHALL BE E70	11/11/2021	FOR APPROVAL
2. ALL GAS RE-ENTRANT CUTS WILL HAVE A RADIUS OF 1/2" U.N.O.		
3. ALL DIMENSIONS ON THIS SHEET WILL MEET THE ALLOWABLE TOLERANCE LISTED U.N.O.		
4. ERECT PIECES WITH ERECTION MARK AT END AS SHOWN ON PLAN.		
5. MATERIAL SHALL BE ERECTED WITHIN ACCORDANCE OF THE LATEST EDITION OF THE CODE OF STANDARD PRACTICE FOR STEEL BUILDINGS BRIDGES.		

ALLOWABLE TOLERANCE + 1/8"-

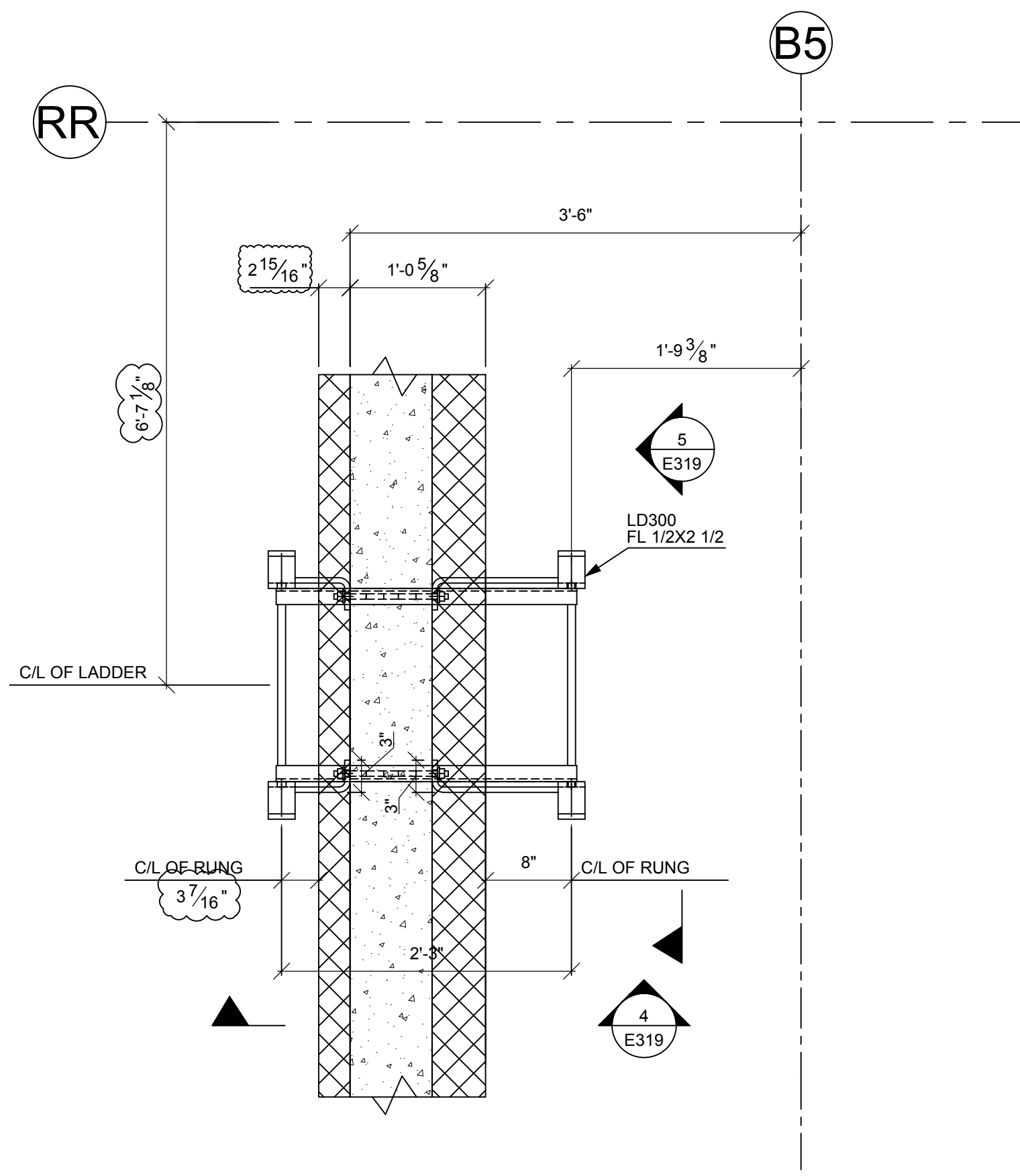
PRINT RECORD		
FOR	NO	DATE
APPL		
SHOP		
DIST		

CONTRACTOR

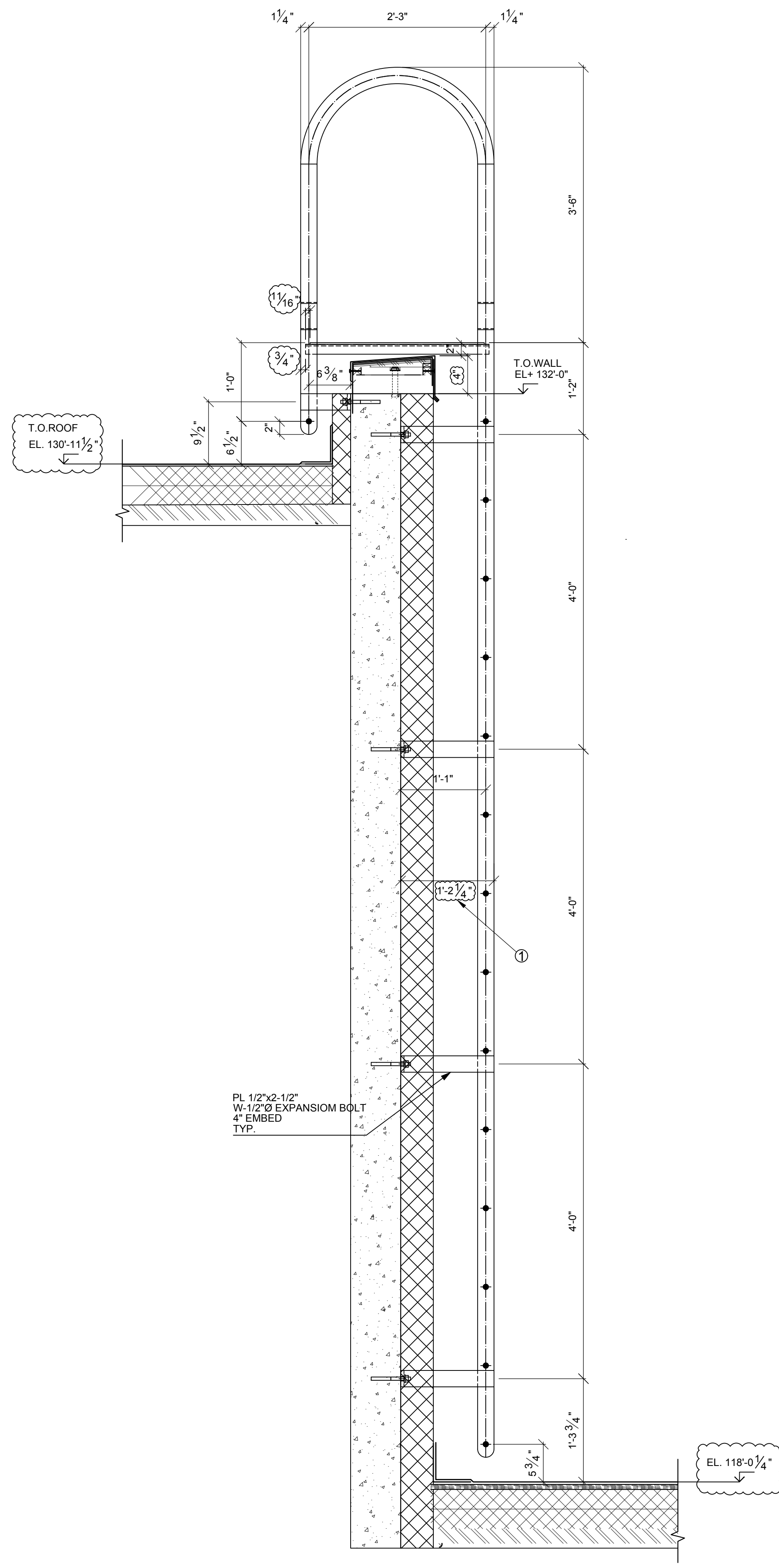
ARCHITECT

PROJECT

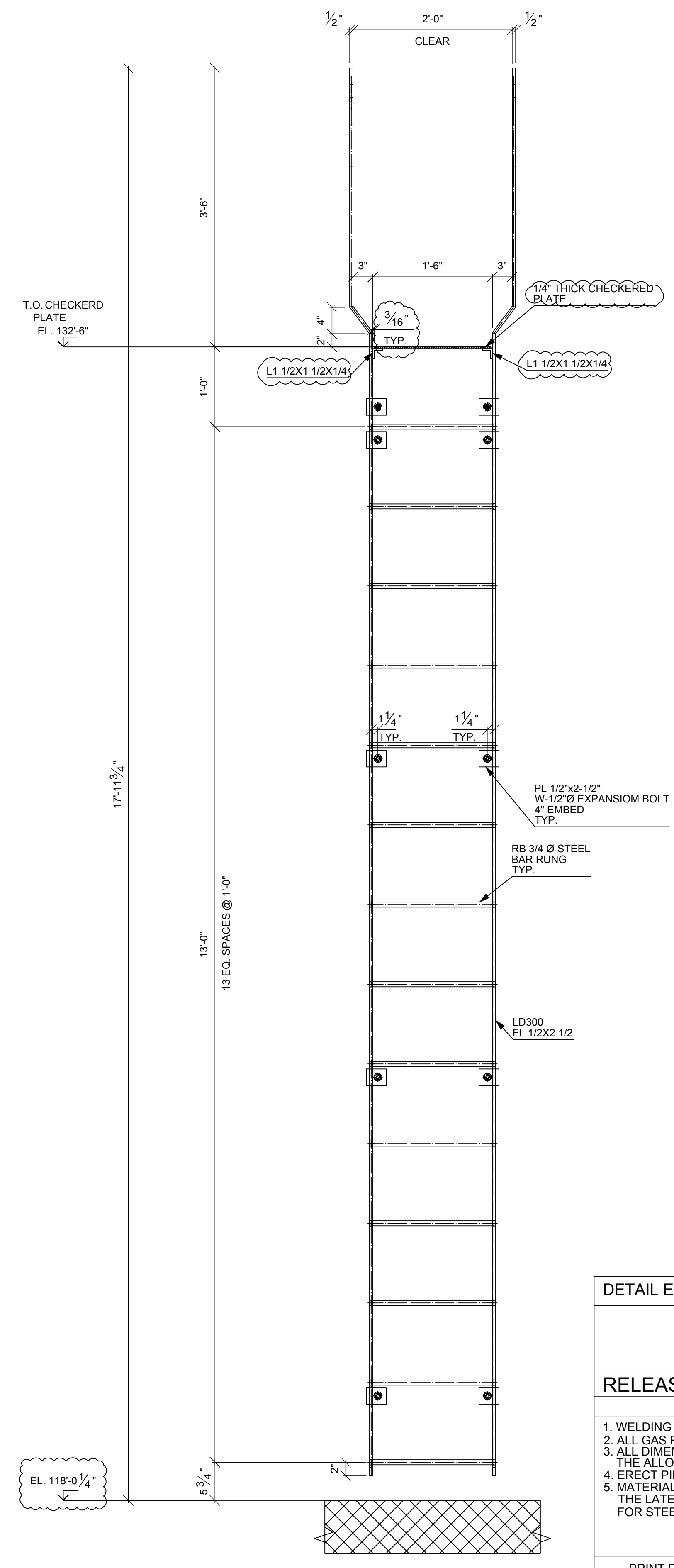
CHECKED	TG	2120	SHEET NO.
KS			E318
FIXED	DATE	Customer No.	OF SHEETS
PS	11/03/2021		



TRUE NORTH PLAN NORTH
ROOF LADDER PLAN AT AREA -C
 REF: 35/A9.6



SECTION - 4
E319



SECTION - 5
E319

APPROVER NOTE:
 1. AS PER ARCH DRAWING A9.6 BENT PLATE LENGTH 1'-0 1/4". BUT AFTER FOLLOWING WALL LOCATING DIMENSION IT IS COMING 1'-2 1/4". PLEASE CONFIRM OUR APPROACH OR SUGGEST.

PLEASE VERIFY ALL CLOUDED DIMENSIONS WITH APPROVAL NOTE DURING APPROVAL STAGE. IF NOT IT WILL BE ASSUMED THAT SAME ARE ACCEPTED AND READY TO PROCEED FOR FABRICATION

APPROVER TO VERIFY ALL CLOUDED INFORMATION.

DETAIL ENGINEERING :

VEGAZVA Vegazva Technologies Inc.
 3701 W Algonquin Rd STE 640
 Rolling Meadows, IL 60008 USA

RELEASED :- FOR APPROVAL

GENERAL NOTES:

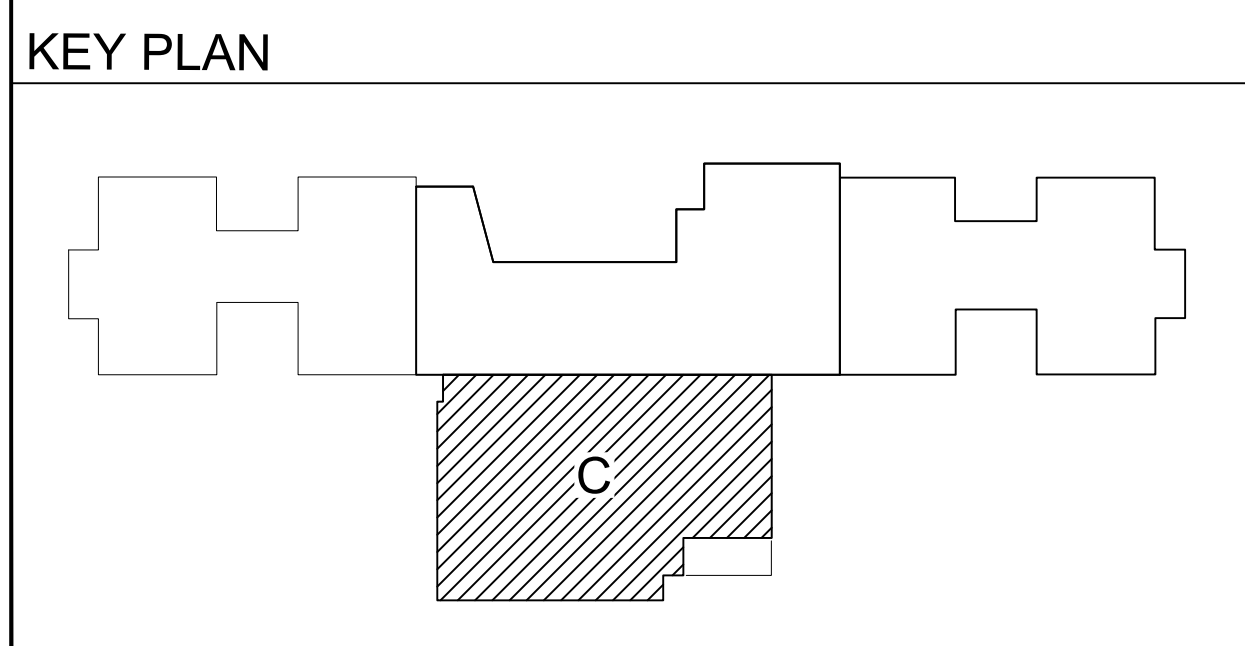
NO	DATE	REVISION
1. WELDING ELECTRODE SHALL BE E70	11/10/2021	FOR APPROVAL
2. ALL GAS RE-ENTRANT CUTS WILL HAVE A RADIUS OF 1/2" U.N.O.		
3. ALL DIMENSIONS ON THIS SHEET WILL MEET THE ALLOWABLE TOLERANCE LISTED U.N.O.		
4. ERECT PIECES WITH ERECTION MARK AT END AS SHOWN ON PLAN.		
5. MATERIAL SHALL BE ERECTED WITHIN ACCORDANCE OF THE LATEST EDITION OF THE CODE OF STANDARD PRACTICE FOR STEEL BUILDINGS BRIDGES.		

ALLOWABLE TOLERANCE + 1/8"-

PRINT RECORD		
FOR	NO	DATE
APPL		
SHOP		
DIST		

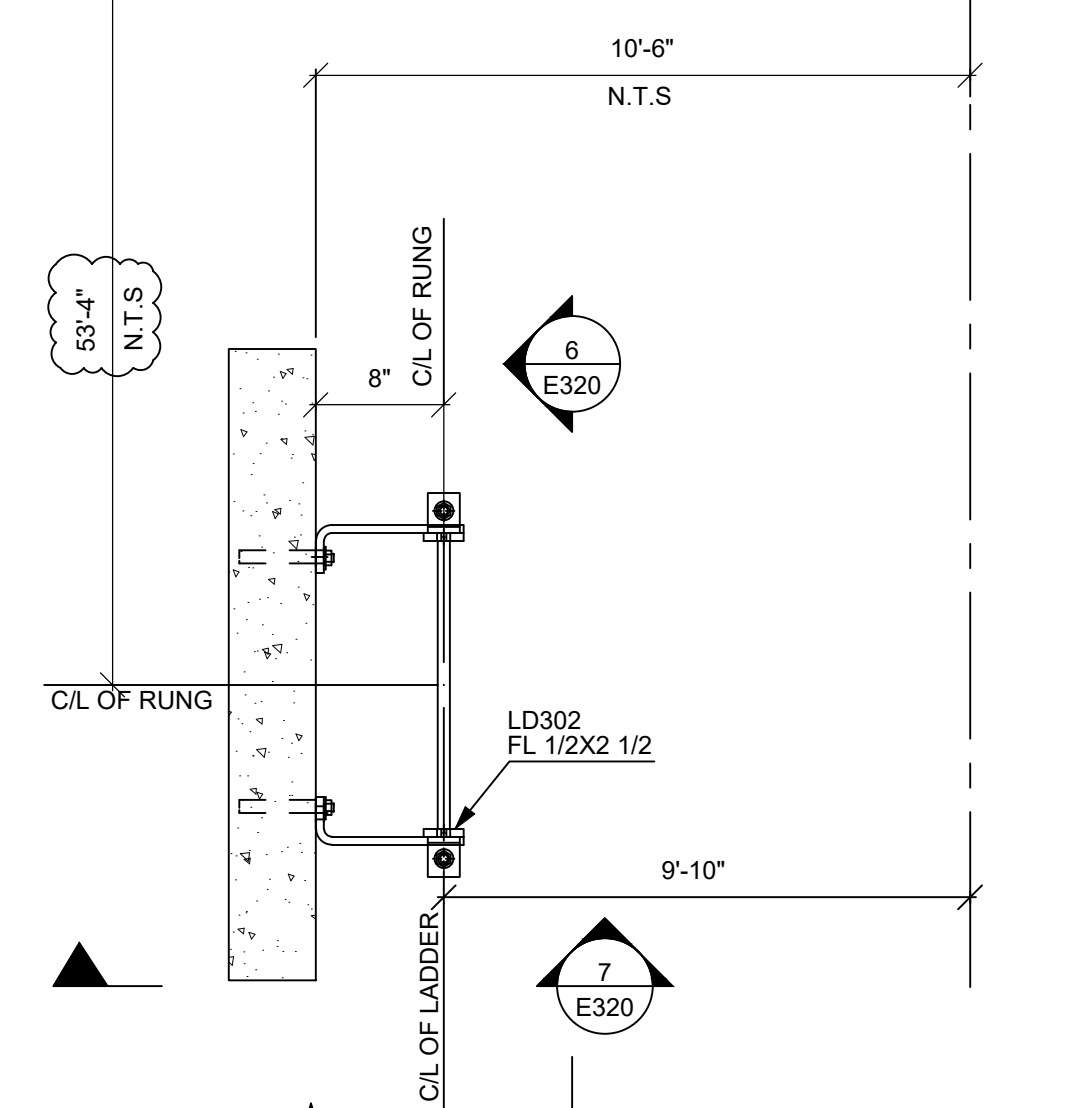
CONTRACTOR	
ARCHITECT	
PROJECT	

CHECKED	TG	2120	SHEET NO.
KS		Customer No.	E319
FIXED	DATE		OF SHEETS
PS	11/03/2021		



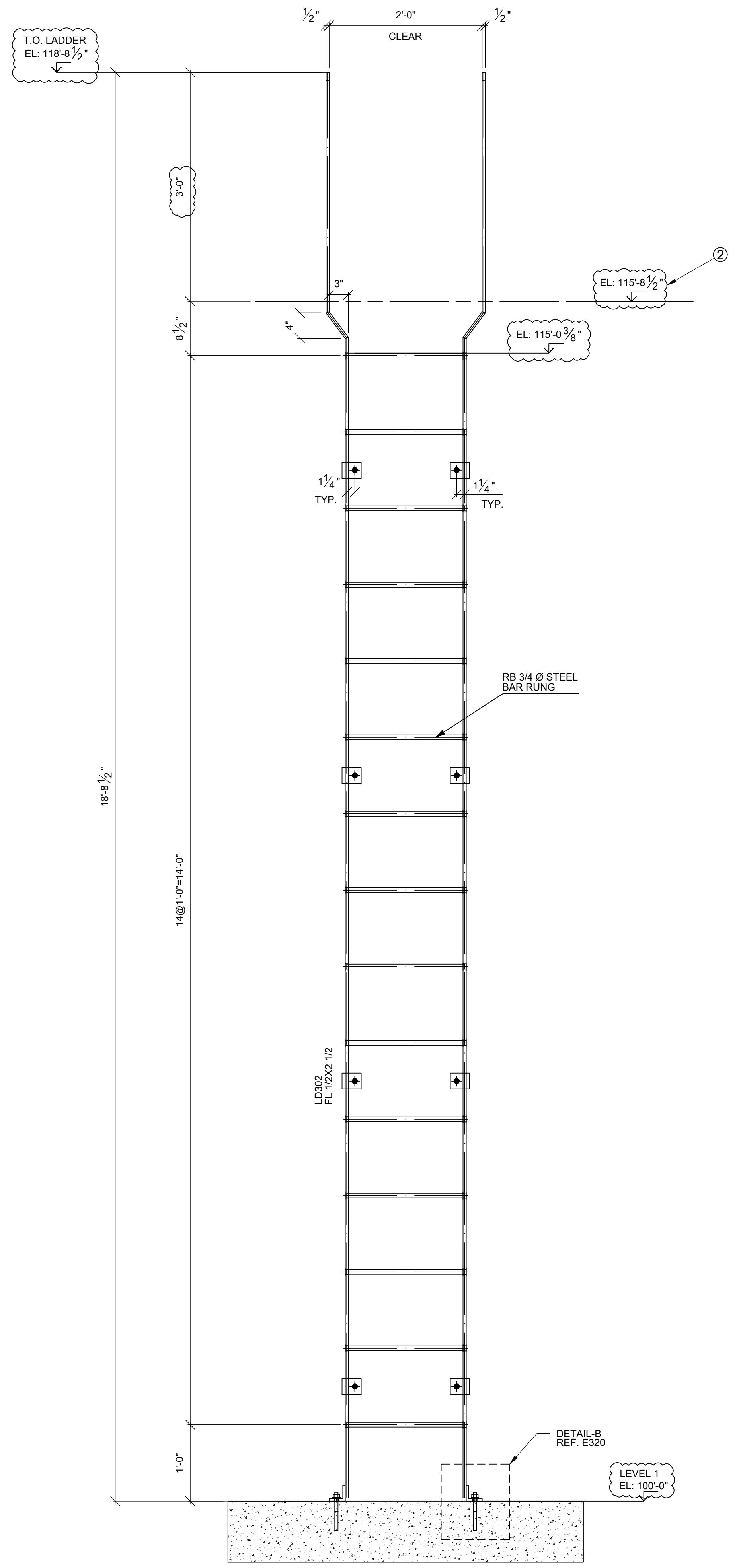
UU

B6

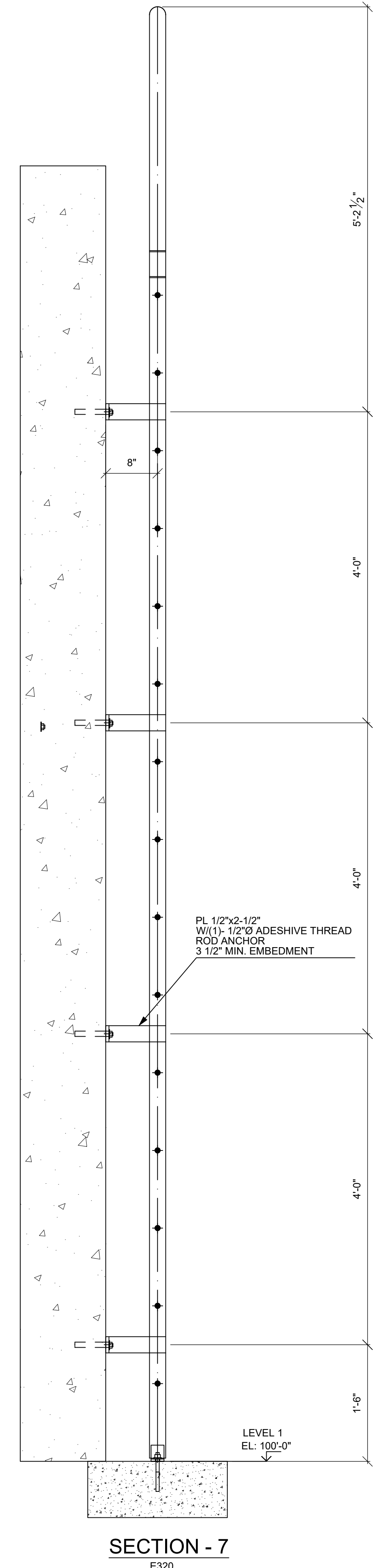


ROOF LADDER PLAN AT AREC -C
REF:A11.1C

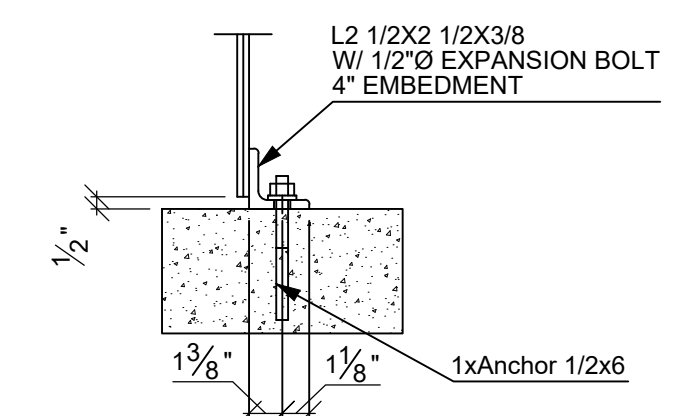
TRUE NORTH PLAN NORTH



SECTION - 6
REF:9/A11.1



SECTION - 7
E320



DETAIL-B

APPROVER NOTE:

- APPROVER TO VERIFY LADDER HEIGHT, PROFILE USED FOR THIS LADDER. CURRENTLY WE HAVE USED DETAIL 9/A11.1.
- APPROVER TO VERIFY TOP OF SLAB AT LADDER LOCATION AS ROOF IS IN SLOPE & LOCATION OF LADDER IS NOT CONFIRM.

PLEASE VERIFY ALL CLOUDED DIMENSIONS WITH APPROVAL NOTE DURING APPROVAL STAGE. IF NOT IT WILL BE ASSUMED THAT SAME ARE ACCEPTED AND READY TO PROCEED FOR FABRICATION

APPROVER TO VERIFY ALL CLOUDED INFORMATION.

DETAIL ENGINEERING :
VEGAZVA Vegazva Technologies Inc.
 3701 W Algonquin Rd STE 640
 Rolling Meadows, IL 60008 USA

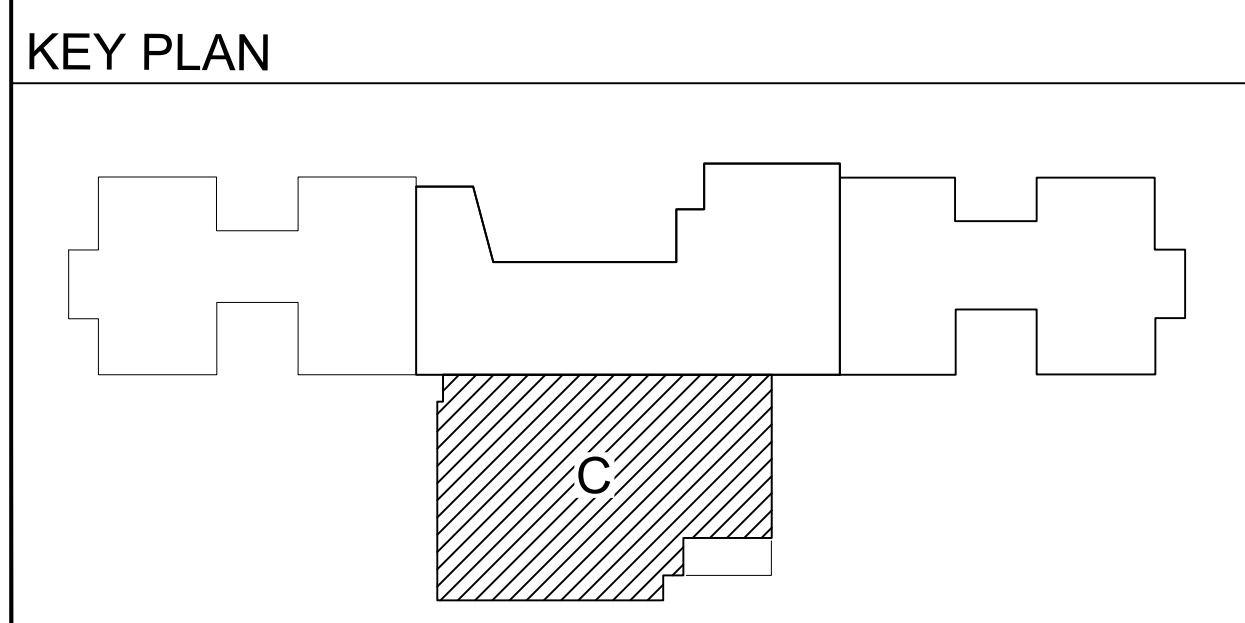
RELEASED :- FOR APPROVAL

GENERAL NOTES:

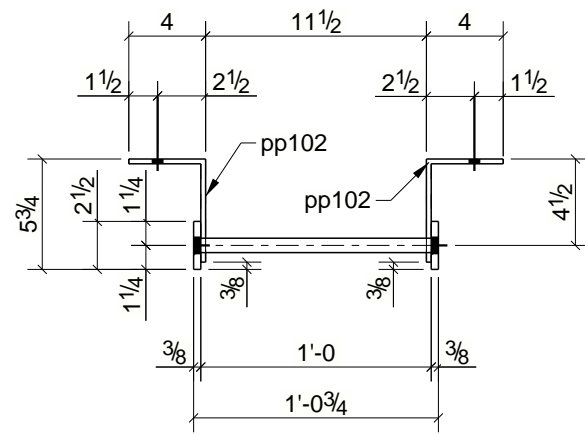
NO	DATE	REVISION
1. WELDING ELECTRODE SHALL BE E70	11/10/2021	FOR APPROVAL
2. ALL GAS RE-ENTRANT CUTS WILL HAVE A RADIUS OF 1/2" U.N.O.		
3. ALL DIMENSIONS ON THIS SHEET WILL MEET THE ALLOWABLE TOLERANCE LISTED U.N.O.		
4. ERECT PIECES WITH ERECTION MARK AT END AS SHOWN ON PLAN.		
5. MATERIAL SHALL BE ERECTED WITHIN ACCORDANCE OF THE LATEST EDITION OF THE CODE OF STANDARD PRACTICE FOR STEEL BUILDINGS BRIDGES.		

ALLOWABLE TOLERANCE + 1/8"

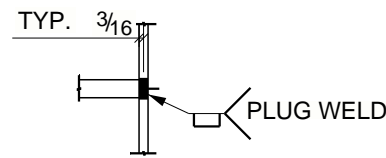
PRINT RECORD			SHEET NO.	
FOR	NO	DATE	KS	E320
APPL			TG	2120
SHOP			DATE	Customer No.
DIST			PS	11/03/2021
CONTRACTOR			OF SHEETS	
ARCHITECT				
PROJECT				



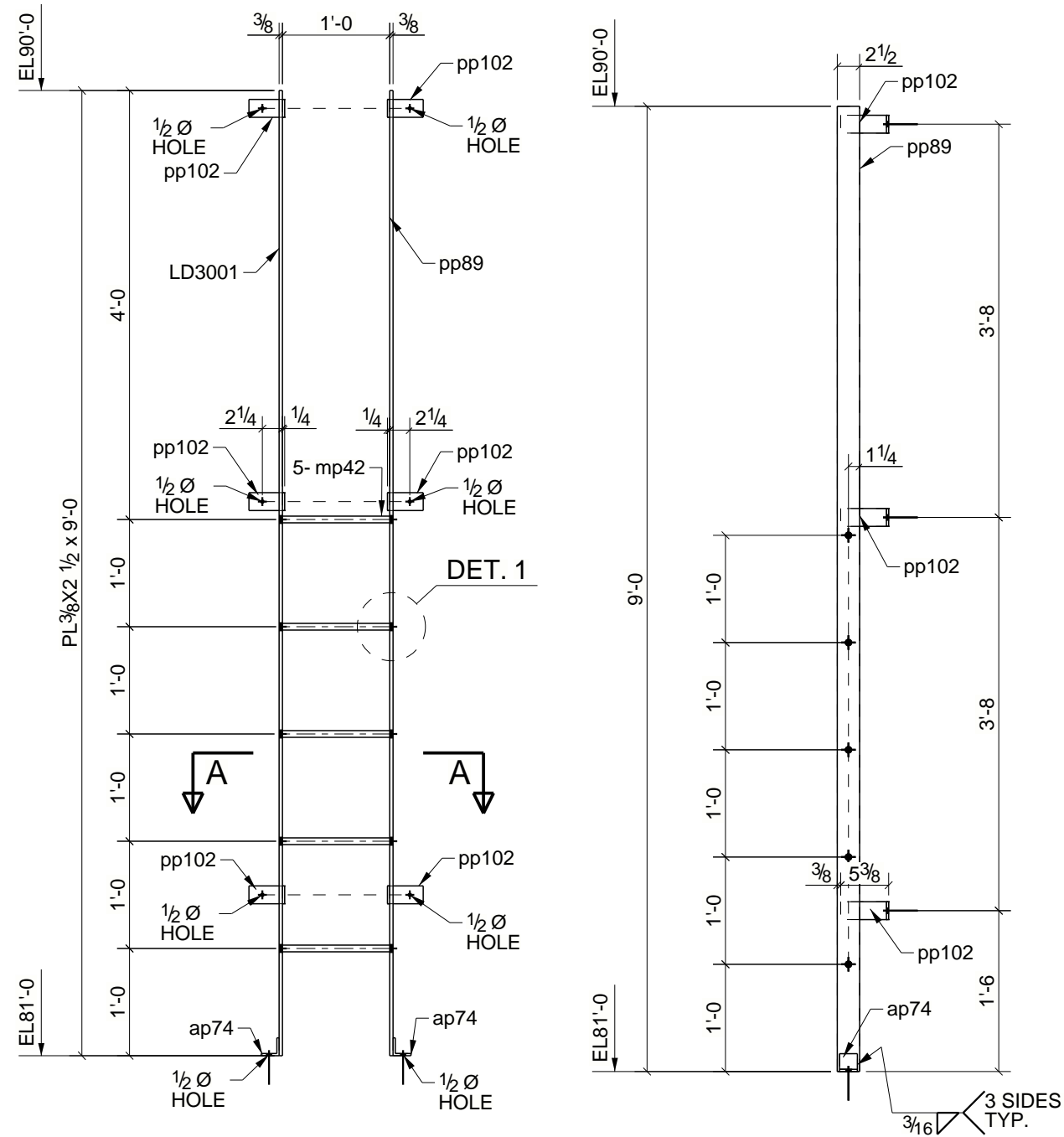
KEY PLAN



A-A



DETAIL 1



ONE - PIT LADDER - LD3001

BILL OF MATERIAL

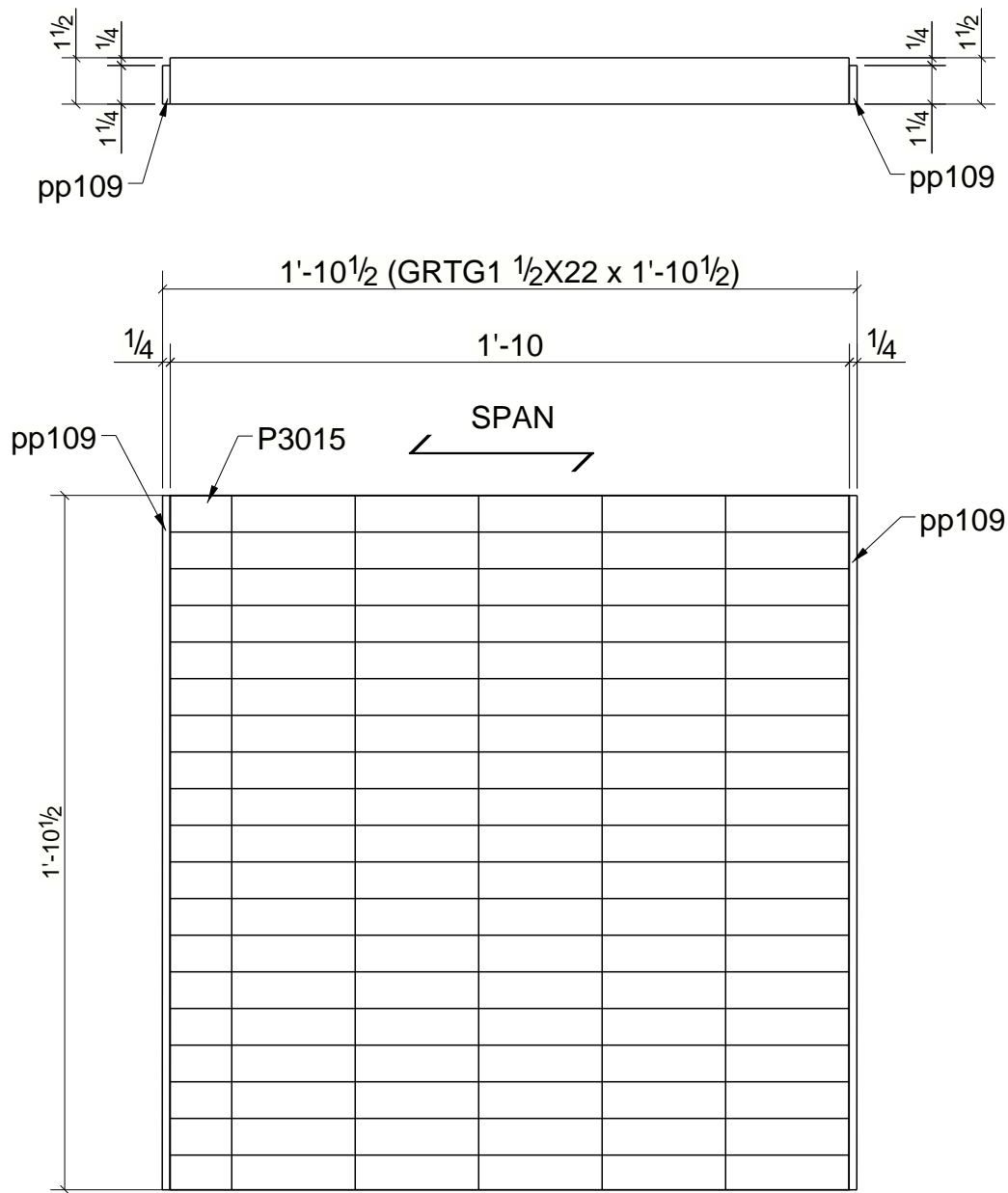
Qty Ea.	Qty Tot	Piece Mark	Description	Length	Weight Total	Remarks	Adv Mill #	Steel Grade
	1	LD3001	PIT LADDER					
1	1		PL3/8"X2 1/2"	9'-0"	29			A36
2	2	ap74	L2X2X1/4	0'-2"	1			A36
5	5	mp42	RB3/4"	1'-0 3/8"	7			A36
1	1	pp89	PL3/8"X2 1/2"	9'-0"	29			A36
6	6	pp102	PL1/4"X2"	0'-8 7/8"	8			A36

DOMESTIC MATERIAL REQUIRED =	NO
BOLTS	TYPE 1 SNUG TIGHT UNO
ELECTRODES	E70XX (LH) UNO
OPEN HOLES	13/16 UNO
SURFACE PREP	SSPC-SP2 UNO
PAINT	ONE COAT STD. SHOP PRIMED UNO

PROJECT NAME	
LOCATION	
CONTRACTOR	
ARCHITECT	

01/22/2021	0	For Fabrication	AR
10/22/2020	A	For Approval	KD
DATE	REV	DESCRIPTION	BY
DESCRIPTION		DRAWN BY KD	JOB No. 5120
		CHECKED BY UDS	DRG No. LD4001

Tekla Structures



B.B. 1 1/2 X 3/16 McNICHOLS TYPE GW (19W4)
 CROSS BARS 4 O.C.
 BRG. BARS 1 3/16 O.C.


ONE - GRATING PLATE - P3015
(GALVANIZED)

01/22/2021	0	For Fabrication	AR
11/12/2020	A	For Approval	NS
DATE	REV	DESCRIPTION	BY

BILL OF MATERIAL

Qty Ea.	Qty Tot	Piece Mark	Description	Length	Weight Total	Remarks	Adv Mill #	Steel Grade
	1	P3015	GRATING PLATE					
1	1		GRTG1 1/2"X22"	1'-10 1/2"	211			A36
2	2	pp109	PL1/4"X1 1/4"	1'-10 1/2"	4			A36

DOMESTIC MATERIAL REQUIRED =	NO	PROJECT NAME	
BOLTS	TYPE 1 SNUG TIGHT UNO	LOCATION	
ELECTRODES	E70XX (LH) UNO	CONTRACTOR	
OPEN HOLES	13/16 UNO	ARCHITECT	
SURFACE PREP	SSPC-SP2 UNO		
PAINT	ONE COAT STD. SHOP PRIMED UNO		

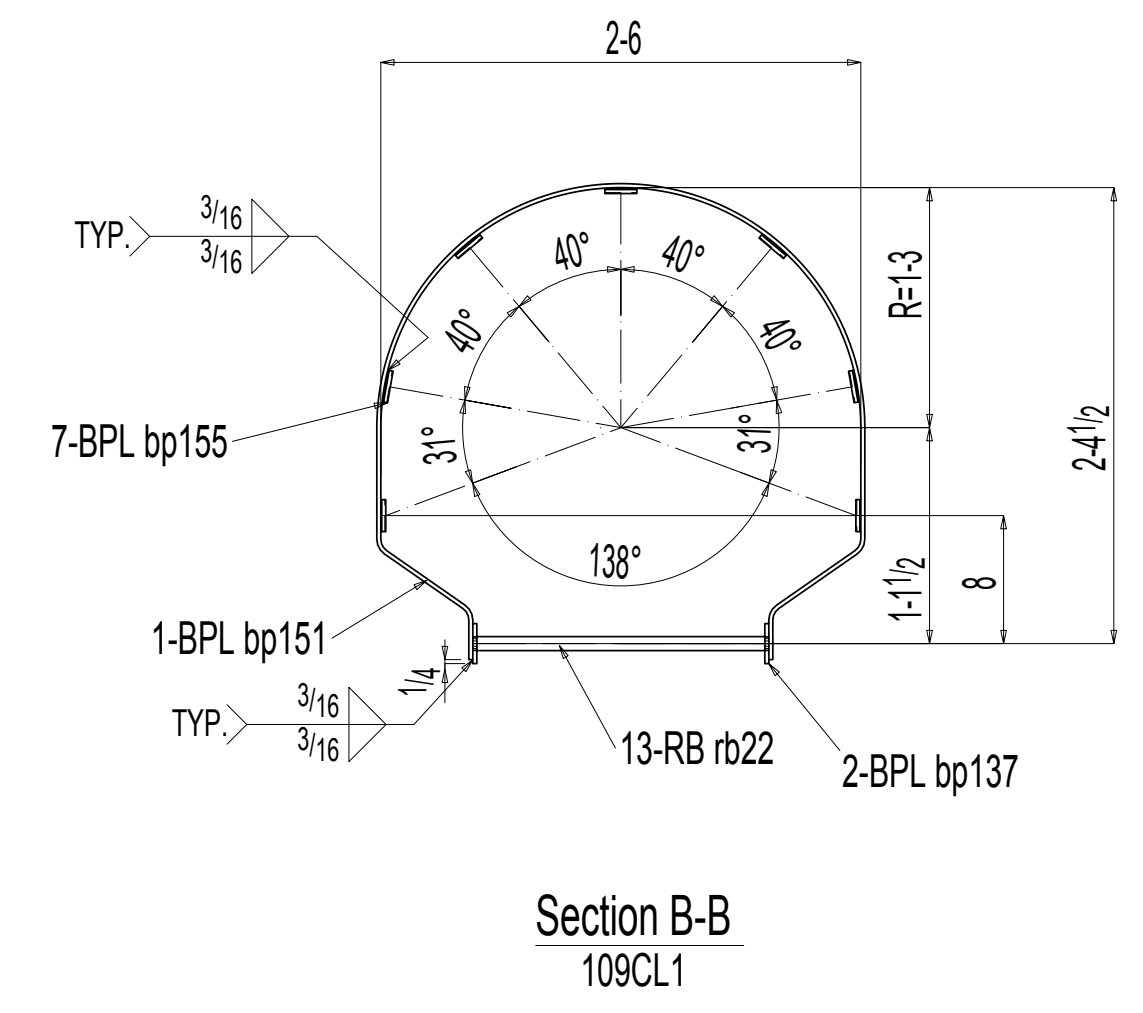
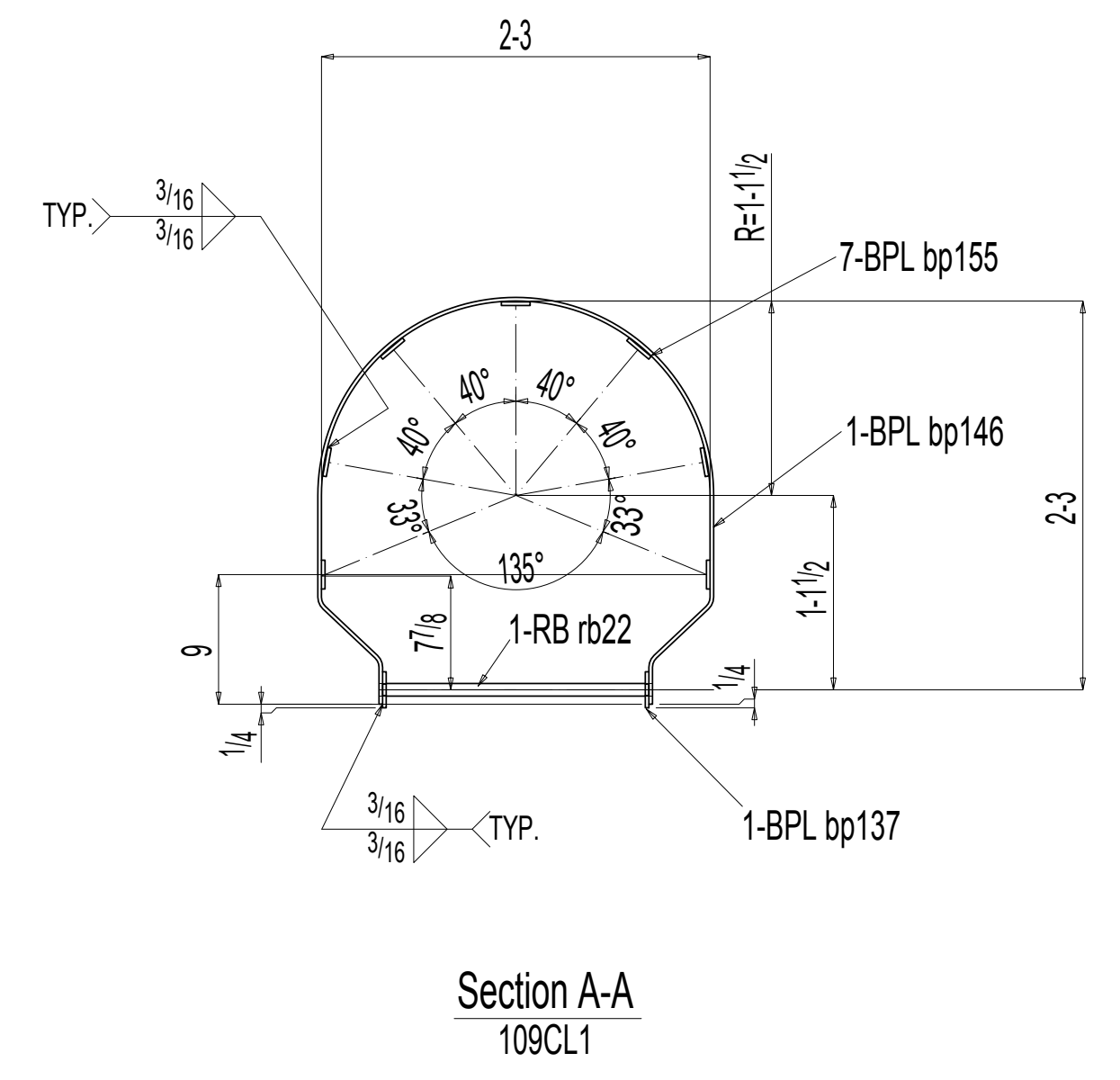
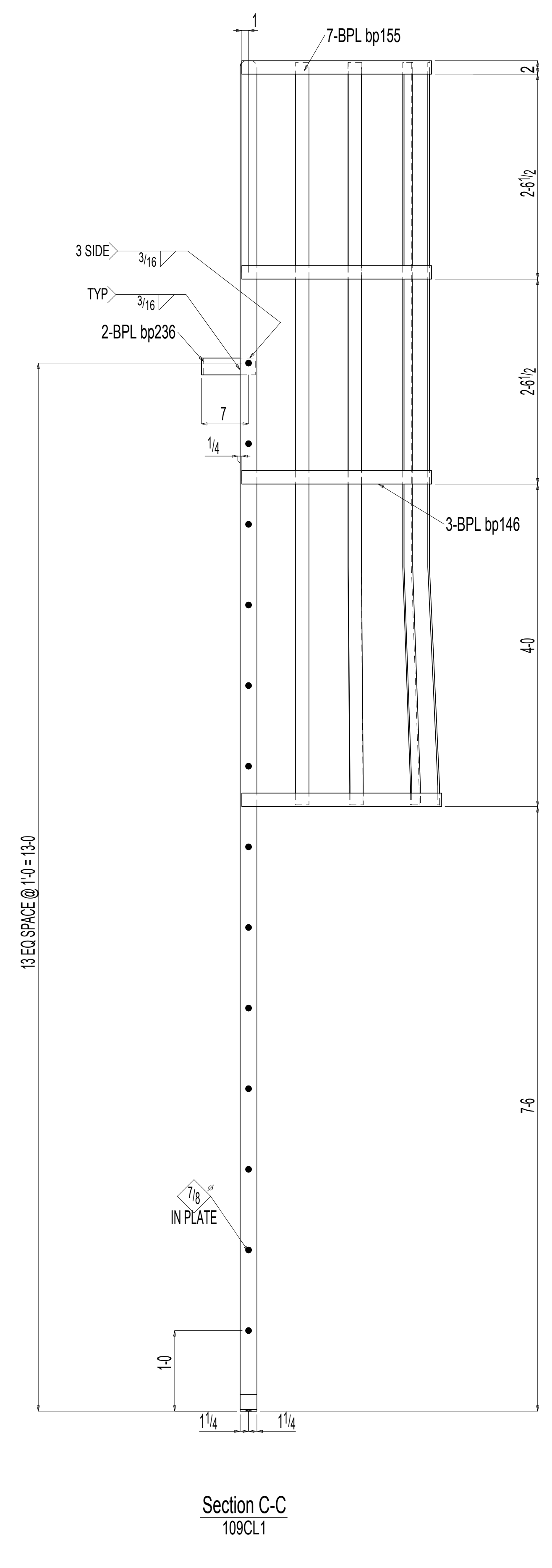
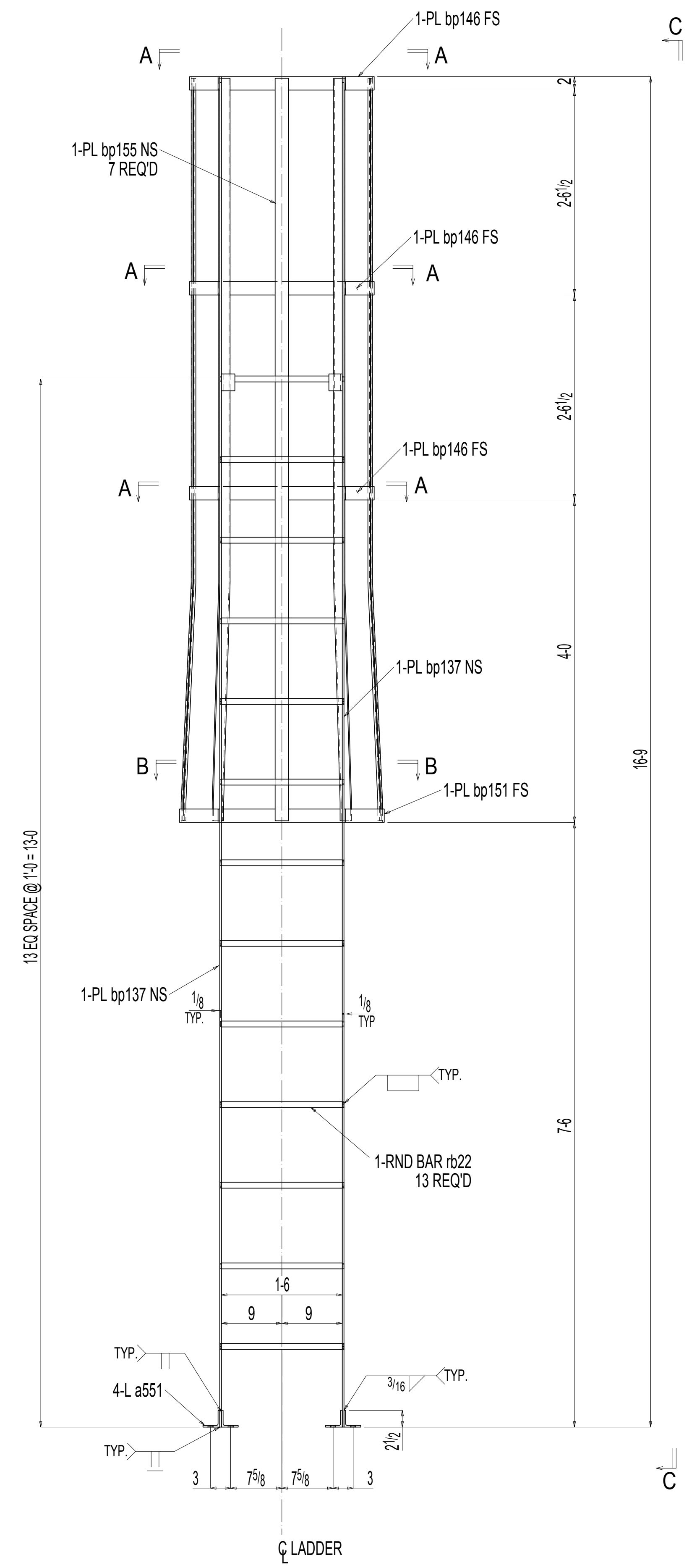


DESCRIPTION	DRAWN BY KD	JOB No. 5120
	CHECKED BY SAT	DRG No. P3015

Tekla Structures

BILL OF MATERIAL

PC	QTY	MATERIAL	LENGTH	WEIGHT	STEEL	REMARKS
109CL1	ONE	LADDER				Galv
bp137	2	BPL 1/2x2 1/2	16-9	36	A36	BENT
a551	4	L 2 1/2x2 1/2x1/4	2 1/2	1	A36	
bp236	2	BPL 1/2x1 1/8	2 1/2	2	A36	BENT
bp155	7	BPL 1/2x2	9-2 1/2	16	A36	BENT
bp151	1	BPL 1/2x2	6-10 1/2	12	A36	BENT
bp146	3	BPL 1/2x2	6-3 1/4	11	A36	BENT
rb22	13	RB 7/8	1-6 1/4	3	A36	



ONE LADDER 109CL1

Section C-C
109CL1

Section A-A
109CL1

Section B-B
109CL1

NOTE
1) RUNGS ARE TO BE KNURLED

DESCRIPTION	DATE	BY	CHK'D	APP'D	DWG NO.
LADDER	15-04	ST	RN		109

FILLET RADIUS=1/2" UNO