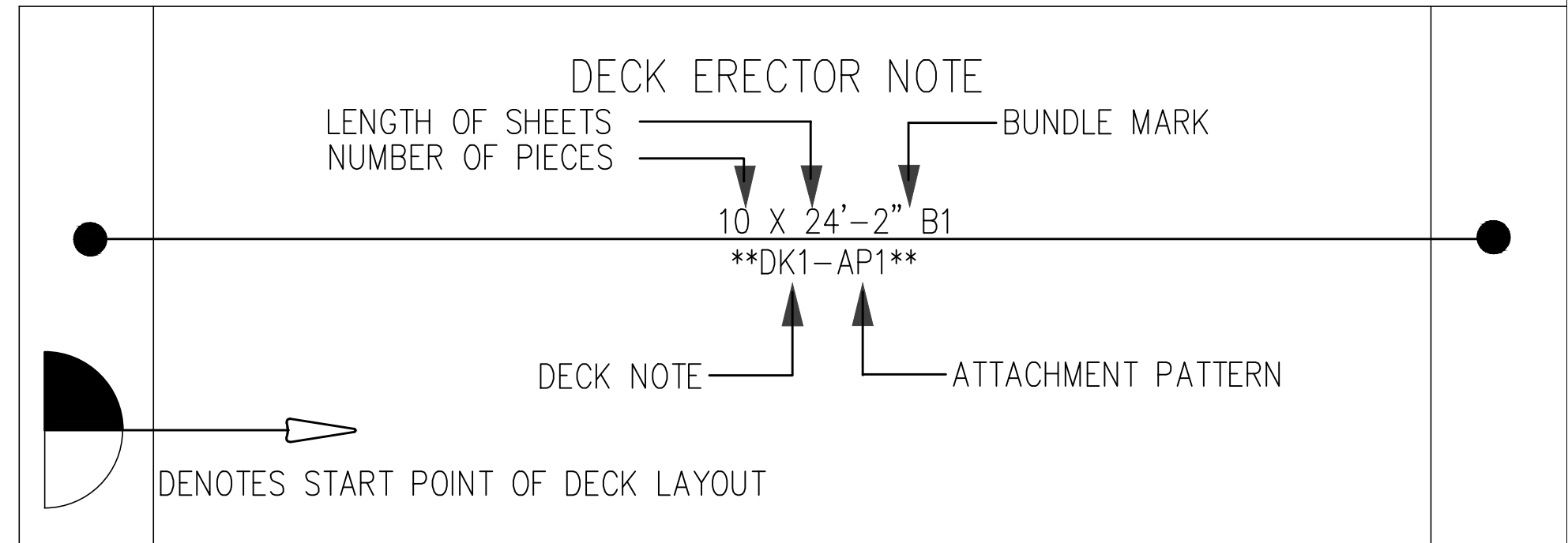


- RECOMMENDATIONS FOR HANDLING AND ERECTING VULCRAFT STEEL DECK**
- ALSO REFER TO SDI MANUAL OF CONSTRUCTION WITH STEEL DECK PUBLISHED BY THE STEEL DECK INSTITUTE (847-458-4647)
- CHECK QUANTITIES AND CONDITION OF DECK AND ACCESSORIES ON ARRIVAL. NOTE ON THE DELIVERY TICKET ANY SHORTAGES OR DISCREPANCIES. VULCRAFT WILL NOT BE LIABLE FOR ANY SHORTAGES OR DAMAGE NOT NOTED.
  - WHEN UNLOADING VULCRAFT STEEL DECK, USE CARE TO AVOID ANY DAMAGE TO THE MATERIAL. VULCRAFT IS NOT RESPONSIBLE FOR DAMAGE INCURRED WHILE UNLOADING.
  - VULCRAFT STEEL DECK SHOULD BE STORED OFF THE GROUND WITH ONE END ELEVATED TO PROVIDE DRAINAGE. A WATERPROOF COVER SHOULD BE PROVIDED WITH PROPER VENTILATION TO AVOID CONDENSATION.
  - DECK BUNDLES CAN WEIGH 4000 POUNDS. CARE MUST BE TAKEN TO AVOID OVERLOADING OF STRUCTURAL COMPONENTS WHEN PLACING BUNDLES ON THE ROOF OR FLOOR. DO NOT STACK BUNDLES ON STRUCTURAL COMPONENTS.
  - VULCRAFT SHALL BE NOTIFIED IMMEDIATELY IF DECK AND ACCESSORIES CANNOT BE ERECTED PER THE FINAL ERECTION PLANS TO ENABLE THE RESPONSIBLE ENTITY TO EITHER CORRECT THE ERROR OR APPROVE THE MOST EFFICIENT AND ECONOMICAL METHOD OF CORRECTION TO BE USED BY OTHERS. WITHOUT THIS NOTIFICATION, VULCRAFT WILL NOT BE RESPONSIBLE FOR ANY FIELD REPAIRS OR CHANGES MADE WITHOUT PRIOR CONSENT.
  - DO NOT USE VULCRAFT STEEL DECK AS A WORKING PLATFORM UNTIL THE DECK IS ATTACHED. LOOSE DECK SHEETS SHALL BE SECURED TO PREVENT THE WIND FROM DISPLACING THE SHEETS AND CAUSING INJURY TO PERSONS OR PROPERTY.
  - POUR STOP SPLICES ARE ONLY ALLOWED OVER A SUPPORT.
  - WHEN AN UNSUPPORTED POUR STOP IS SPECIFIED, STEPPING DIRECTLY ON A POUR STOP IS NOT PERMITTED AT ANY TIME AND THE DECK SHEET MUST BE PLACED SO THE WEB AT THE EDGE OF DECK LANDS ON THE POUR STOP.
  - VULCRAFT STEEL DECK SHALL BE ERECTED WITH A MINIMUM BEARING OF 1-1/2 INCHES UNLESS OTHERWISE SHOWN.
  - VULCRAFT 1.5C (AND 1.5VLR DECK) IS BUNDLED "UPSIDE-DOWN" AND MUST BE INVERTED WHEN IT IS ERECTED.
  - CUTTING AND FRAMING OF OPENINGS NOT SHOWN ON THE ERECTION DRAWINGS SHALL BE THE RESPONSIBILITY OF THE TRADES INVOLVED.
  - SKREW CUTS AND LENGTHWISE CUTS SHALL BE THE RESPONSIBILITY OF THE DECK ERECTOR.
  - ALL CONSTRUCTION LIVE LOADS (ROOFING AND POURING OF CONCRETE) MUST BE DISTRIBUTED BY APPROPRIATE MEANS TO PREVENT DAMAGE TO VULCRAFT STEEL.
  - WHEN USING VULCRAFT STEEL DECK WITH INTERLOCKING SIDELAPS, CORRECTLY ALIGN DECK WITH THE STRUCTURAL COMPONENTS. ALIGN SHEETS TO OBTAIN PROPER COVERAGE. DO NOT CONNECT SIDELAPS UNTIL DECK IS PERMANENTLY ATTACHED.
  - VULCRAFT ROOF DECK SHALL BE ERECTED BEGINNING AT THE LOW SIDE, UNLESS NOTED OTHERWISE, SO THAT END LAPS ARE SHINGLE FASHION WHEN THE ROOF SLOPE EXCEEDS 1/4 INCH IN 12 INCHES.
  - UNLESS NOTED OTHERWISE, ENDLAPS OF SHEETS SHALL BE A MINIMUM OF 2 INCHES AND SHALL OCCUR OVER A JOIST TOP CHORD ANGLE OR OTHER SUPPORT. THE ENDS OF VULCRAFT COMPOSITE DECK SHALL BE BUTTED (NOT LAPPED) TO FACILITATE THE USE OF STUDS WHEN REQUIRED.
    - IF THE STUDS ARE BEING APPLIED THROUGH COMPOSITE FLOOR DECK ONTO THE STRUCTURAL STEEL, THE STUD WELDS CAN BE USED TO REPLACE THE PUDDLE WELDS.
  - WHEN THE DECK SPANS EXCEED THOSE RECOMMENDED BY THE STEEL DECK INSTITUTE FOR "UNSHORED CONSTRUCTION" VULCRAFT COMPOSITE DECK MUST BE SHORED IN ACCORDANCE WITH THE APPLICABLE "ACI REQUIREMENTS"
  - UNLESS NOTED OTHERWISE, FASTEN DECK TO SUPPORTS AT ALL EDGE RIBS PLUS A SUFFICIENT NUMBER OF INTERIOR RIBS TO PROVIDE AN AVERAGE SPACING OF 12 INCHES APART, BUT NOT MORE THAN 18 INCHES. IN ALL CASES THE SIDELAPS ARE TO BE FASTENED TO THE SUPPORT.
    - UNLESS NOTED OTHERWISE, ALL PUDDLE WELDS ARE TO BE AT LEAST 5/8 INCH DIAMETER OR AN ELONGATED WELD WITH AN EQUAL PERIMETER.
    - WELDING WASHERS SHALL BE USED WITH METAL THICKNESSES LESS THAN .028 INCHES (22 GAGE) THICK.
  - UNLESS NOTED OTHERWISE, VULCRAFT STEEL DECK WITH SPANS GREATER THAN FIVE FEET SHALL HAVE SIDELAPS FASTENED AT MIDSPAN OR AT 36 INCH INTERVALS, WHICHEVER IS SMALLER.
  - DECK ACCESSORIES ARE TO BE POSITIVELY ATTACHED BY WELDING, SCREWING, OR BUTTON PUNCHING AS FOLLOWS:
    - POUR STOPS AT 12 INCHES ON CENTER.
    - GIRDER FILLERS AND SPLIT DECK SHEETS AT 18 INCHES ON CENTER.
    - END CLOSURES AT 36 INCHES ON CENTER.
    - SUMP PANS AT 6 INCHES ON CENTER.
    - FLAT PLATE AND RIDGE AND VALLEY PLATE AT 12 INCHES ON CENTER.
- THESE DECK NOTES ARE GENERAL NOTES ONLY. IF A DISCREPANCY EXISTS ELSEWHERE ON THE FINAL PLANS FOR FIELD USE, THE GENERAL NOTES SHOULD BE CONSIDERED A MINIMUM.



**ABBREVIATIONS**

AP - ATTACHMENT PATTERN	IFW - INSIDE FACE OF WALL
BCX - BOTTOM CHORD EXTENSION	JG - JOIST GIRDER
BL - BASE LENGTH	JS - JOIST SUBSTITUTE
BM - BEAM	JST - JOIST
BOM - BILL OF MATERIALS	K - SHORT SPAN JOIST
BPL - BENT PLATE (NBV)	LH - LONG SPAN JOIST
CC - CELL CLOSURE	LS - LOOSE STRUT
CL - CENTERLINE	NBV - NOT BY VULCRAFT/VERCO
CX - CEILING EXTENSION	OFW - OUTSIDE FACE OF WALL
DE - DECK EDGE	PS - POUR STOP
EOA - EDGE OF ANGLE	SB - SLOPE BEARING
EOS - EDGE OF SLAB	STD - STANDARD GAGE
FC - FIELD CUT	SL - SIDE LAP
FOW - FACE OF WALL	SP - SUMP PAN
GA - GAGE	TCX - TOP CHORD EXTENSION
GB - GIRDER BRACE	TOS - TOP OF STEEL
GF - GIRDER FILLER	UNO - UNLESS NOTED OTHERWISE



**VULCRAFT STEEL DECK \*\* NOTE DK1 \*\***  
 TYPE = 1.5VL GAGE = 20  
 SHOP PRIMER (TOP/BOTTOM) = NONE/NONE ON G60 GALVANIZED SHEET  
 ALIGN SHEETS TO MAINTAIN PROPER COVERAGE: 36 INCHES NET LAY

**\*\* AP1\*\***

FASTEN USING 36/4 PATTERN AT END LAPS WITH X-ENP-19  
 FASTEN USING 36/4 PATTERN AT INTERMEDIATE SUPPORTS  
 AND AT PERIMETER 12 INCHES C/C WITH X-ENP-19  
 SIDE LAPS AT 12 INCHES C/C WITH HILTI SCREWS #10  
 BUTT JOINT OCCUR AT SUPPORTS ONLY WITH 1/2" GAP

1.5VL 36/4 PATTERN AT ALL SUPPORTS

**DETAIL ENGINEERING :**

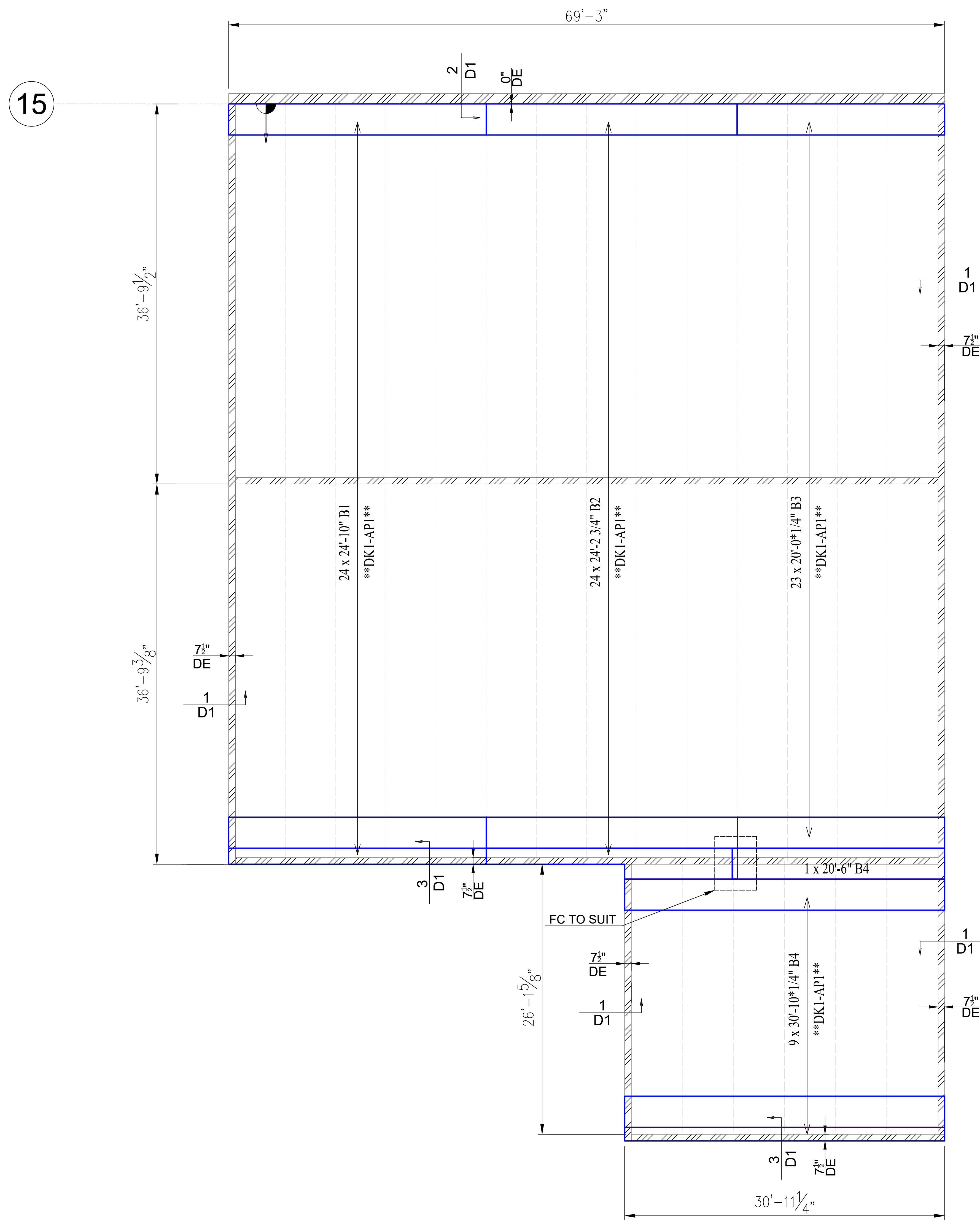
**VEGAZVA**  
www.vegazva.com

**Vegazva Technologies Inc.**  
3701 W Algonquin Rd STE 640  
Rolling Meadows, IL 60008 USA

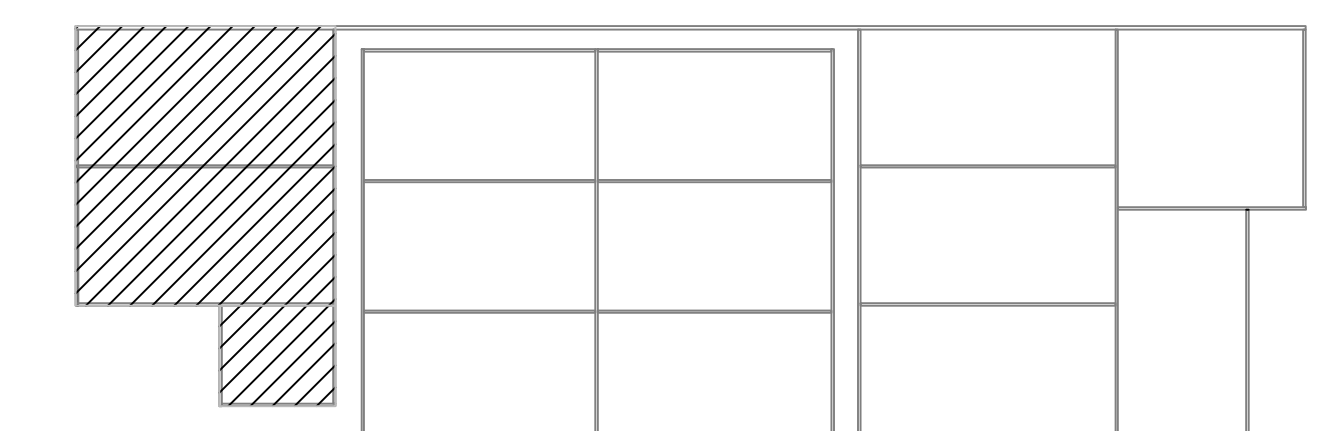
<b>DESCRIPTION</b>	<b>DATE DRAWN</b> 09/17/2021	<b>DRAWN BY:</b> AC
<b>REPUBLIC IRON WORKS, INC.</b> 40 Champion Drive, Chicopee, MA - 01020. TEL: 413 - 593 - 5100, FAX: 413 - 593 - 9997		
<b>CONTRACTOR</b>		
<b>PROJECT NAME</b> MAC Champion Drive Grow & Processing Facility	<b>LOCATION</b> 77 Champion Drive Chicopee, MA	
<b>DETAILING CO.</b> Vegazva Tech.	<b>ENGINEER</b> Johnson Structural Engineering	
<b>CUST. P.O.</b>	<b>REF. DRG.</b>	
<b>JOB No.</b> 21-231	<b>DRG No.</b> D1	<b>REV.</b> 0

REV	DESCRIPTION	DATE	DWN	CHK
0	For Field Use	10/07/2021	AC	SB
A	For Approval	09/20/2021	AC	SB

SR. NO.	BUNDLE NO.	QTY.	LENGTH FT-IN
1	B1	24	24'-10"
2	B2	24	24'-2 <sup>3</sup> / <sub>4</sub> "
3	B3	23	20'-0 <sup>1</sup> / <sub>4</sub> "
4	B4	1	20'-6"
5	B4	9	30'-10 <sup>1</sup> / <sub>4</sub> "



**MEZZANINE FRAMING PLAN (PARTIAL)**  
(REF:S2.1)



**KEY PLAN**

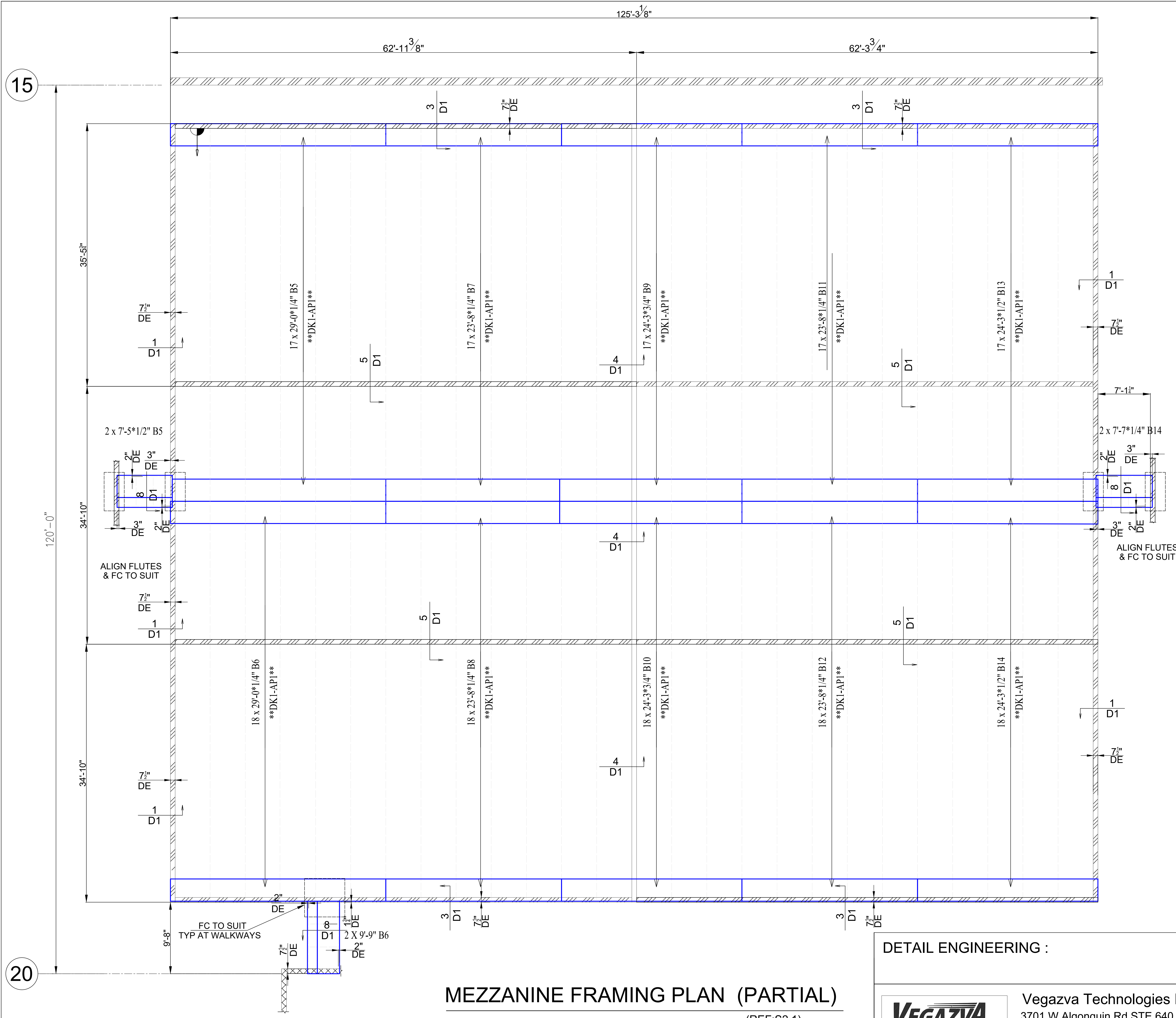
DETAIL ENGINEERING :



Vegazva Technologies Inc.  
3701 W Algonquin Rd STE 640  
Rolling Meadows, IL 60008 USA

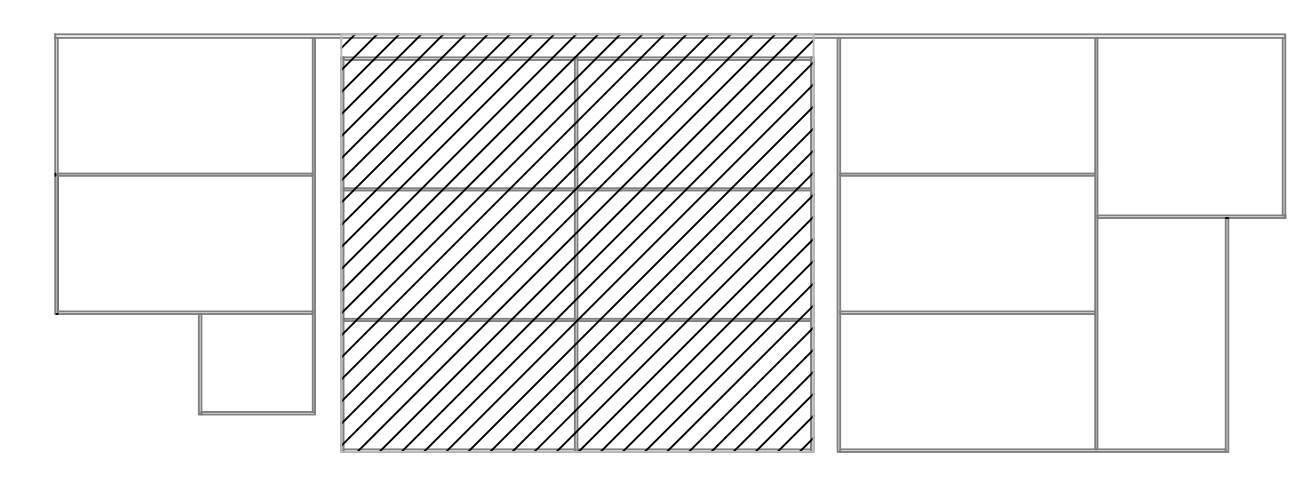
REV	DESCRIPTION	DATE	DWN	CHK
0	For Field Use	10/07/2021	AC	SB
A	For Approval	09/20/2021	AC	SB

DESCRIPTION	DATE DRAWN	DRAWN BY:
	09/17/2021	AC
<b>REPUBLIC IRON WORKS, INC.</b> 40 Champion Drive, Chicopee, MA - 01020. TEL: 413 - 593 - 5100, FAX: 413 - 593 - 9997		
CONTRACTOR		
PROJECT NAME <b>MAC Champion Drive Grow &amp; Processing Facility</b>	LOCATION 77 Champion Drive Chicopee, MA	
DETAILING CO. Vegazva Tech.	ENGINEER Johnson Structural Engineering	
CUST. P.O.	REF. DRG.	S 2.1
JOB No. 21-231	DRG No. D2	REV. 0



**MEZZANINE FRAMING PLAN (PARTIAL)**  
(REF:S2.1)

SR. NO.	BUNDLE NO.	QTY.	LENGTH FT-IN
1	B5	2	7'-5 1/2"
2	B5	17	29'-0 1/4"
3	B6	18	24'-0 1/4"
4	B7	17	23'-8 1/4"
5	B8	18	23'-8 1/4"
6	B9	17	24'-3 3/4"
7	B10	18	24'-3 3/4"
8	B11	17	23'-8 1/4"
9	B12	18	23'-8 1/4"
10	B13	17	24'-3 1/2"
11	B14	18	24'-3 1/2"
12	B14	2	7'-7 1/4"



**KEY PLAN**

**DETAIL ENGINEERING :**

**VEGAZVA**  
www.vegazva.com

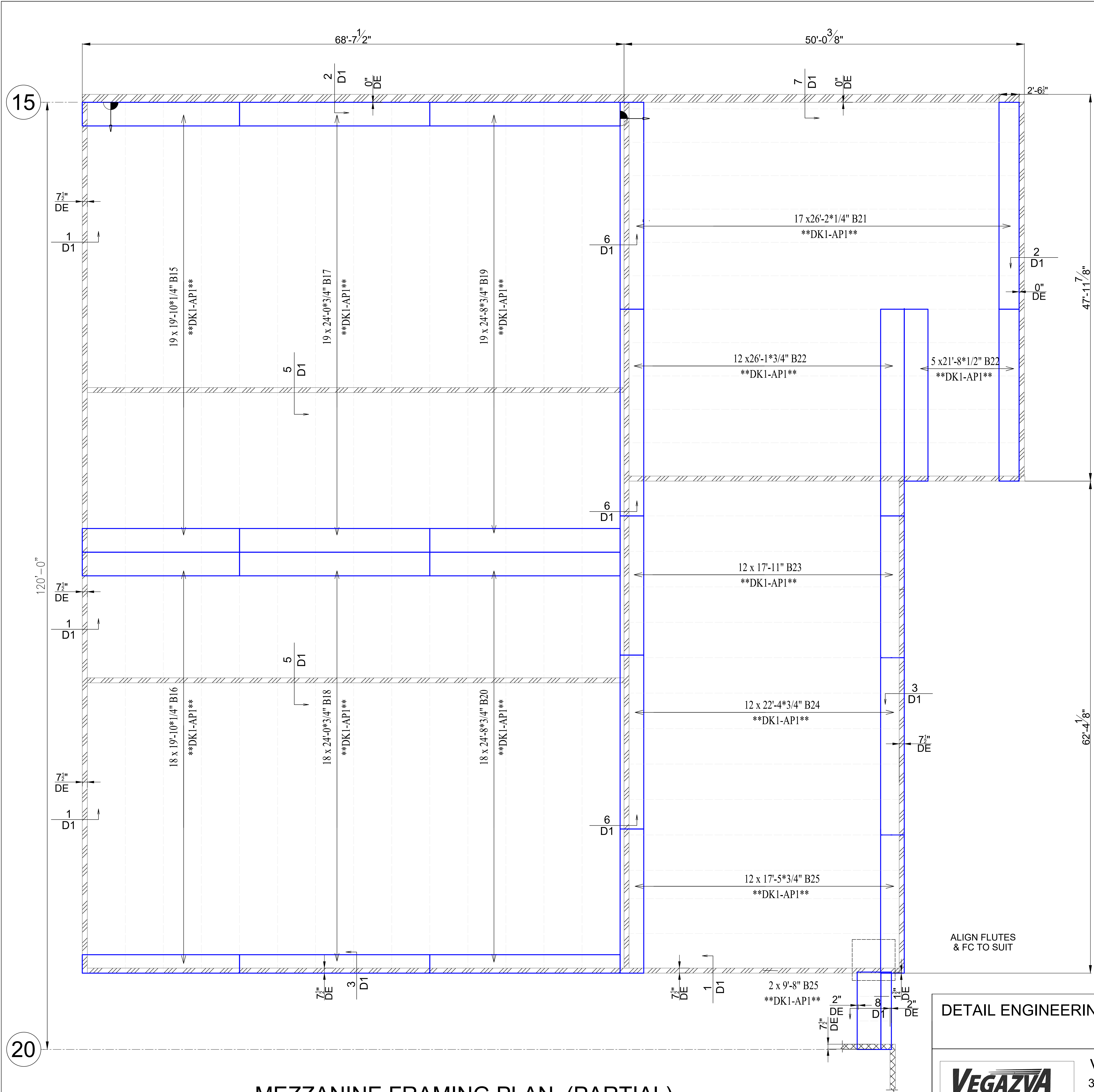
Vegazva Technologies Inc.  
3701 W Algonquin Rd STE 640  
Rolling Meadows, IL 60008 USA

REV	DESCRIPTION	DATE	DWN	CHK
0	For Field Use	10/07/2021	AC	SB
A	For Approval	09/20/2021	AC	SB

DESCRIPTION	DATE DRAWN	DRAWN BY:
	09/17/2021	AC
<b>REPUBLIC IRON WORKS, INC.</b>		
40 Champion Drive, Chicopee, MA - 01020. TEL: 413 - 593 - 5100, FAX: 413 - 593 - 9997		
CONTRACTOR		
PROJECT NAME	LOCATION	
MAC Champion Drive Grow & Processing Facility	77 Champion Drive Chicopee, MA	
DETAILING CO.	ENGINEER	
Vegazva Tech.	Johnson Structural Engineering	
CUST. P.O.	REF. DRG.	S 2.1
JOB No. 21-231	DRG No. D3	REV. 0

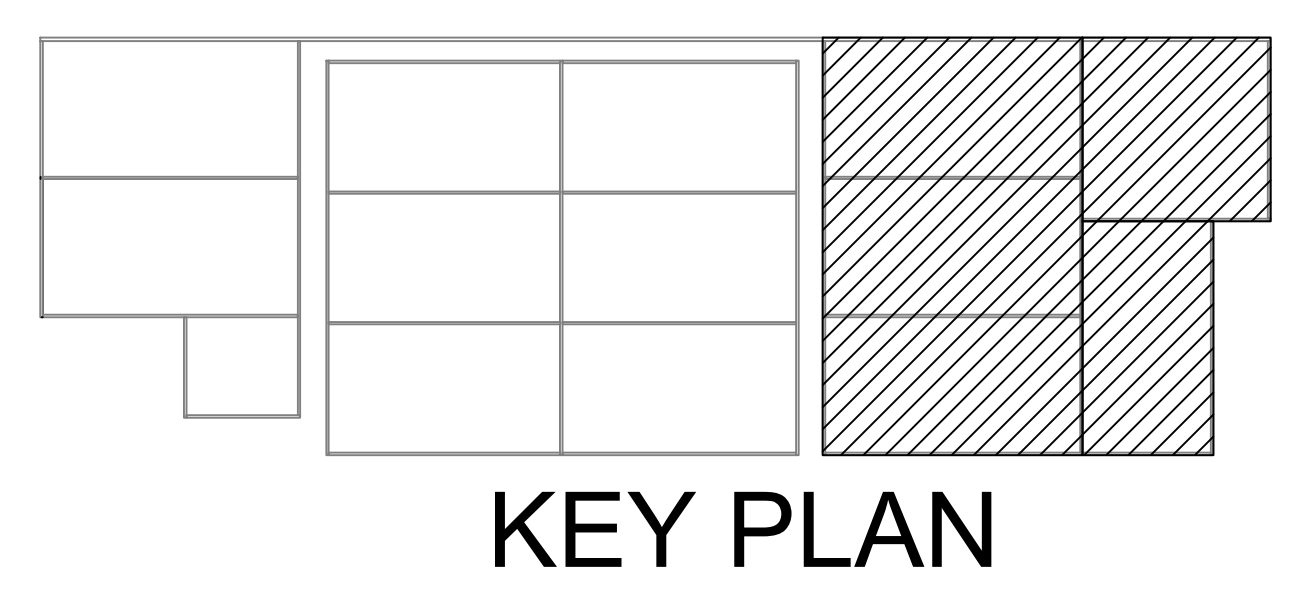
15

20



**MEZZANINE FRAMING PLAN (PARTIAL)**  
(REF:S2.1)

SR. NO.	BUNDLE NO.	QTY.	LENGTH FT-IN
1	B15	19	19'-10 1/4"
2	B16	18	19'-10 1/4"
3	B17	19	24'-0 3/4"
4	B18	18	24'-0 3/4"
5	B19	19	24'-8 3/4"
6	B20	18	24'-8 3/4"
7	B21	17	26'-2 1/4"
8	B22	12	26'-1 3/4"
9	B22	5	21'-8 1/2"
10	B23	12	17'-11"
11	B24	12	22'-4 3/4"
12	B25	12	17'-5 3/4"
13	B25	2	9'-8"



**DETAIL ENGINEERING :**  
**VEGAZVA**  
www.vegazva.com  
Vegazva Technologies Inc.  
3701 W Algonquin Rd STE 640  
Rolling Meadows, IL 60008 USA

REV	DESCRIPTION	DATE	DWN	CHK
0	For Field Use	10/07/2021	AC	SB
A	For Approval	09/20/2021	AC	SB

DESCRIPTION	DATE DRAWN 09/17/2021	DRAWN BY: AC
<b>REPUBLIC IRON WORKS, INC.</b> 40 Champion Drive, Chicopee, MA - 01020. TEL: 413 - 593 - 5100, FAX: 413 - 593 - 9997		
CONTRACTOR		
PROJECT NAME MAC Champion Drive Grow & Processing Facility	LOCATION 77 Champion Drive Chicopee, MA	
DETAILING CO. Vegazva Tech.	ENGINEER Johnson Structural Engineering	
CUST. P.O.	REF. DRG.	S 2.1
JOB No. 21-231	DRG No. D4	REV. 0